



# Industrial Matting Systems

Dry Environments

Wet / Oily Environments

Anti-Static / Non-Conductive

Entry & Logo Mats

PRODUCT  
CATALOG

[www.crownmats.com](http://www.crownmats.com)







## Crown Matting Technologies,

located in Fremont, Ohio, has been setting the pace in commercial and industrial matting, using proprietary innovative technologies to further our products and the industry for over 70 years.

Today, our purpose has never been clearer: manufacture and deliver products with the same strength and character of the workforce we support. Our products are as easy to stand on as they are to stand behind.

Crown Matting Technologies has been fortunate enough to cushion a generation of workers, helping to reduce leg and back fatigue, thereby improving the safety and productivity of your workforce. We're honored to have done so. And, we look forward to serving our fellow workers for generations to come ... one mat at a time.



**Working hard for the hard working.**

## CONTENTS

**PRODUCT NAME** ..... **ITEM#** ..... **PAGE**

### Dry Environments

2

<b>Zedlan Foam</b> .....	3
Workers-Delight Spiffy Vinyl.....	<b>531/541</b> .....4
Workers-Delight Deck Plate .....	<b>540/550</b> .....4
Workers-Delight Corrugated Rubber.....	<b>544/554</b> .....5
Workers-Delight Spark-Safe .....	<b>545/555</b> .....5
Wear-Bond Comfort-King .....	<b>560/562</b> .....6
Alleviator Comfort-King .....	<b>465</b> .....6
Comfort-King .....	<b>440/445</b> .....7
Para-Mount .....	<b>649</b> .....7
Industrial Deck Plate .....	<b>500/505</b> .....8
Spark-Safe .....	<b>580</b> .....8
Safety-Step Solid-Top.....	<b>685</b> .....9
Yoga Flex .....	<b>695</b> .....9
Wear-Bond Tuff-Spun .....	<b>520/522</b> ...10
Tuff-Spun Foot-Lover .....	<b>410/411/414/430/431/432</b>

### Wet / Oily Environments

11

Ergo-X-Treme .....	<b>775/776/777/779</b> ... 12
Dura-Step II .....	<b>752/753</b> .....12
Safewalk .....	<b>630/635/636</b> ..13
Safety-Step Perforated .....	<b>680/681</b> ...13
Safe-Flow Plus .....	<b>648</b> .....14
Safewalk Light .....	<b>645/646</b> ...14
Diamond Deluxe with Grit-Safe .....	<b>133</b> .....15
Sani-Tred .....	<b>667</b> .....15

### Anti-Static / Non-Conductive

16

Electrically Conductive Deck Plate ...	<b>930</b> .....17
Stat-Control .....	<b>920</b> .....17
Comfort-King Anti-Static .....	<b>910</b> .....17
Military Deck Plate - Switchboard Runner.....	<b>960</b> ...18
Military Smooth - Switchboard Runner.....	<b>965</b> ...18
Corrugated - Switchboard Runner.....	<b>950</b> ...18
Pro-Tekt .....	<b>820</b> .....19
Deck Plate .....	<b>850</b> .....19
Sta-Kleen .....	<b>800</b> .....19
Corrugated Rubber .....	<b>840</b> .....19

### Entry & Logo Mats

20

Jasper .....	<b>175</b> .....21
Oxford Elite.....	<b>265</b> .....21
Oxford .....	<b>360</b> .....21
Mat-A-Dor .....	<b>100</b> .....22
Tire-Track .....	<b>225</b> .....22
<b>Logo Mats</b> .....	23
Super Berber Inlay.....	<b>065</b> .....23
Embossed Anti-Fatigue Mat .....	<b>050</b> .....23
Flocked Mat .....	<b>010</b> .....23
HD Jet-Print .....	<b>030/035</b> .....23
<b>Care &amp; Maintenance</b> .....	24
<b>How to Order</b> .....	24
<b>Warranty</b> .....	24
<b>Chemical Resistance Chart</b> .....	25



# Dry Environments

Crown offers top-performing dry area floor mats for virtually any application.

From Industrial assembly lines to work stations and packing areas, these mats are designed and manufactured to provide outstanding support against muscular fatigue, as well as aid in the ongoing efforts to make every commercial environment as safe as possible for your workforce.

In addition, our Fusion Technology, which permanently bonds two surfaces without the use of glue or adhesive, provides unmatched durability.

With both traditional and made-to-finish products, you won't find a more versatile selection anywhere.

Workers-Delight Spiffy Vinyl p.4







## As resilient as your workforce. As tough as your workplace.

Zedlan foam is the byproduct of two scientists' mission to develop a foam, hard-wearing enough to withstand the harshest environments, yet resilient enough to support the ergonomic needs of your workforce. With three-times the "bounce" of standard vinyl foam, our patented Zedlan foam truly defines high-performance for the industry.

**Strong. Resilient. Safe.** Three critical matting features that can dramatically influence the success your workforce and your business. Zedlan foam was developed with these workplace imperatives in mind.

Here's how we back it up:

- **Strong** - Zedlan foam outwears similar products by nearly three to one
- **Resilient** - Zedlan foam has three times the bounce of traditional anti-fatigue products
- **Safe** - combined with our exclusive slip resistant technology, Zedlan foam offers superior traction compared to standard foam products

Zedlan foam. Just one more way we support our customers by developing industry leading products that support their workforce.

## TAILORED SOLUTIONS

Heavy machinery and concrete floors don't move easily, so we've made our mats hard-wearing and easy to work with. From custom cut and finish, to adaptable and expandable "build to suit" products, we've got you – and your floors – covered.

Our commitment to providing the right solution for unique environments means our products can be produced in a vast variety of configurations, cuts-outs, and shapes (including angles and semi-circles) as well as seamed for larger-width offerings. We've also developed optional nosing for many of our products, providing even more design choices to meet even the most elaborate environmental challenges. Crown's Total Customization offering provides a turn-key approach to a tailored matting solution you simply won't find anywhere else.

If you have a matting challenge you've been working hard to resolve, give us a call. We're here to help, and we're pretty confident we can.



Look for the Zedlan Foam icon in this catalog to identify products containing our patented formulation.



Exclusive technology that permanently bonds two surfaces without use of glues or adhesives.



The Spark Resistant icon indicates FMVSS302 certified products.



The Anti-Static icon indicates static dissipative resistivity



The D.I.N.P. Free icon indicates products that comply with the State of California's Proposition 65 regulations.



Our Slip-Resistant icon indicates foam products coated with our unique slip-resistant formulation to provide additional safety benefits.



The Oily Areas icon indicates products that have been approved for use in certain oily environments. Please see the chemical resistance guide on page 25.



The High Voltage icon indicates Non-Conductive High-Voltage applications



The ThermoGrip icon indicates products with our exclusive red backing, which provides an anti-microbial solution.



Exclusive ThermoFlex technology offers increased durability and allows for customization.

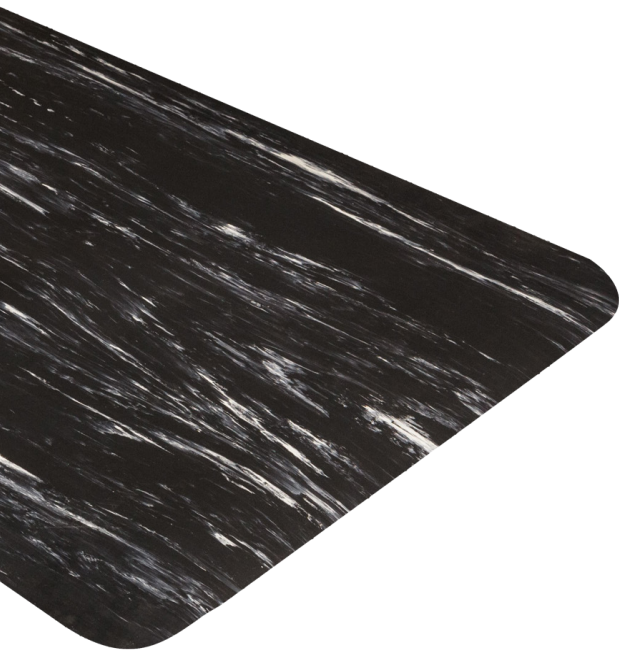


Our Logo icon indicates matting that is part of our custom logo program.



## #531/#541 Workers-Delight Spiffy Vinyl

DRY AREA



### FEATURES

- Puncture-resistant PVC top surface allows for better durability and stability
- Patented Zedlan foam combined with our fusion technology creates an unmatched level of durability and comfort
- New slip-resistant coating on underside of mat ensures steadiness and control on smooth surfaces
- Use for finishing stations, assembly station, work stations and pharmacies

### SPECIFICATIONS

**Standard Sizes:** 2' x 3' 3' x 5' 3' x 12'

**Rolls Sizes:** 2' x 75' 3' x 75' 4' x 75'

**Total Customization:** 2', 3', 4' widths

**Thickness:**

#531 - Standard – 9/16"

#541 - Supreme – 5/8"

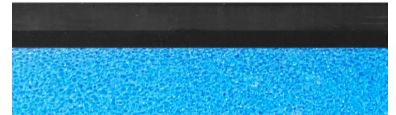
**Colors:** Black, French Gray

### WARRANTY

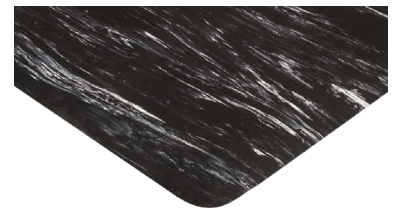
Total Confidence



Vinyl top surface



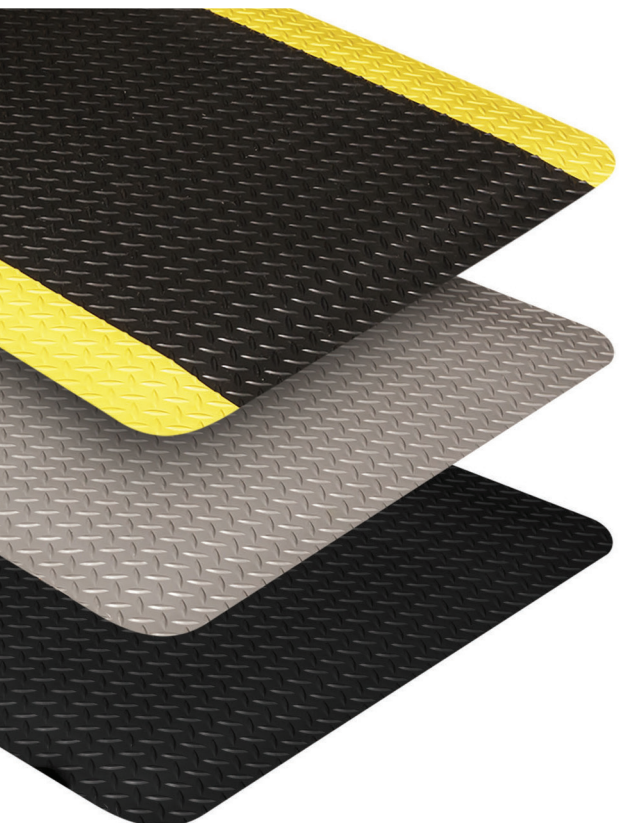
Zedlan foam with slip-resistant coating



Rounded corners and beveled edges

## #540/#550 Workers-Delight Deck Plate

DRY AREA



### FEATURES

- Deck plate PVC surface offers comfort and durability
- Patented Zedlan foam combined with our fusion technology creates an unmatched level of durability and comfort
- New slip-resistant coating on underside of mat ensures steadiness and control on smooth surfaces
- Use for assembly lines, work stations, cart traffic areas, finishing stations or assembly stations

### SPECIFICATIONS

**Standard Sizes:** 2' x 3' 3' x 5' 3' x 12'

**Roll Sizes:** 2' x 75' 3' x 75' 4' x 75'

**Total Customization:** 2', 3', 4' widths

**Thickness:**

#530 - Standard – 9/16"

#540 - Supreme – 5/8" (25% recycled content)

#550 - Ultra – 7/8" provides 25 % more comfort (20% recycled content)

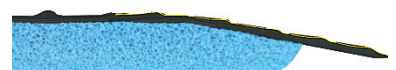
**Colors:** Black & Yellow, Gray, Black

### WARRANTY

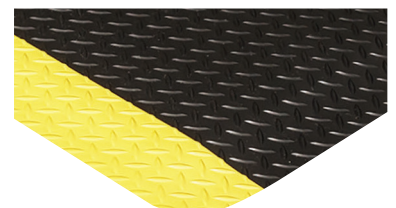
Total Confidence



Deck plate PVC surface



Zedlan foam with slip-resistant coating

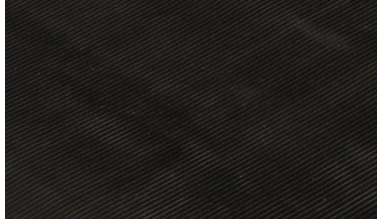


Rounded corners and beveled edges

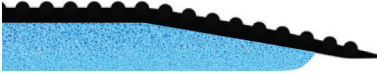


# #544/#554 Workers-Delight Corrugated Rubber

DRY AREA



Corrugated rubber surface



Zedlan foam with slip-resistant coating



Rounded corners and beveled edges

## FEATURES

- Corrugated rubber surface offers directional traction
- Patented Zedlan foam combined with our fusion technology creates an unmatched level of durability and comfort
- New slip-resistant coating on underside of mat ensures steadiness and control on smooth surfaces
- Use for areas with incidental chemical spillage

## SPECIFICATIONS

**Standard Sizes:** 2' x 3' 3' x 5' 3' x 12'

**Roll Sizes:** 2' x 75' 3' x 75' 4' x 75'

**Total Customization:** Up to 12' wide

### Thickness:

**#544 - Standard** – 5/8"  
(30% recycled content)

**#554 - Ultra** – 7/8" provides 50% more comfort  
(20% recycled content)

**Colors:** Black

## WARRANTY

**Total Confidence**

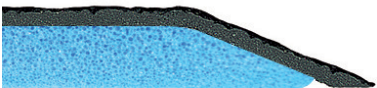


# #545/#555 Workers-Delight Spark-Safe

DRY AREA



Spark-Resistant rubber top surface



Zedlan foam with slip-resistant coating



Rounded corners and beveled edges

## FEATURES

- Specially formulated spark-resistant rubber surface (passes FMVSS302) repels sparks and hot metal shards
- Patented Zedlan foam combined with our fusion technology creates an unmatched level of durability and comfort
- New slip-resistant coating on underside of mat ensures steadiness and control on smooth surfaces
- For use in machine shops, assembly lines, steel mills or maintenance departments

## SPECIFICATIONS

**Standard Sizes:** 2' x 3' 3' x 5' 3' x 12'

**Roll Sizes:** 2' x 75' 3' x 75' 4' x 75'

**Total Customization:** Up to 12' wide

### Thickness:

**#545 - Standard** – 5/8"  
(30% recycled content)

**#555 - Ultra** – 7/8" provides 50% more comfort  
(20% recycled content)

**Colors:** Black

## WARRANTY

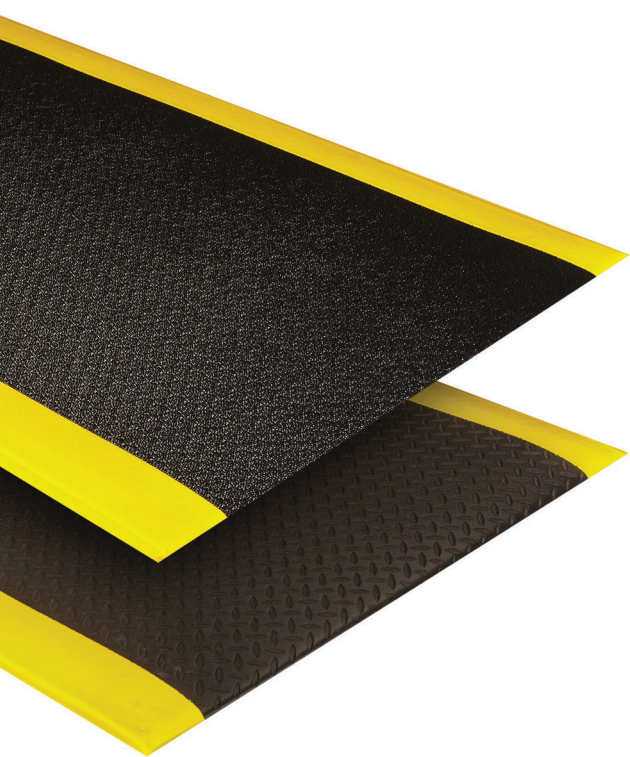
**Total Confidence**





## #560/#562 Wear-Bond Comfort-King

DRY AREA



### FEATURES

- Wear-Bond process molecularly bonds foam injected PVC top surface with Zedlan foam, creating greater overall comfort than rigid PVC/rubber-type surfaces
- Patented Zedlan foam combined with our fusion technology creates an unmatched level of durability and comfort
- Use for work stations, pick modules, pharmacies, packaging areas or cashier stations

### SPECIFICATIONS

**Standard Sizes:** 2' x 3' 3' x 5' 3' x 12'

**Roll Sizes:** 2' x 75' 3' x 75' 4' x 75'

**Total Customization:** 2', 3', 4' widths

**Thickness:** 9/16"

#### Colors:

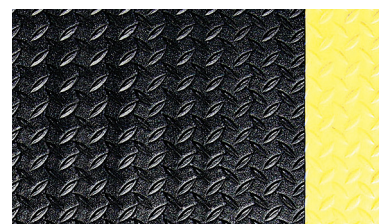
**#562 Pebble Surface:** Black & Yellow, Black, Gray

**#560 Deck-Top Surface:** Black & Yellow, Black

**WARRANTY**  
Total Confidence



#562 Foam injected PVC pebble embossed surface



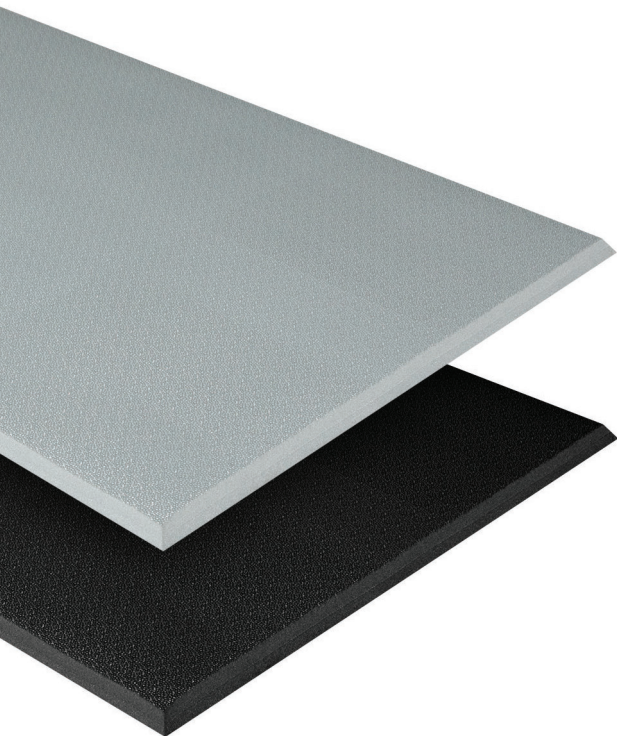
#560 Foam injected PVC deck-top surface



Zedlan foam

## #465 Alleviator Comfort-King

DRY AREA



### FEATURES

- Double-thick patented Zedlan foam adds unmatched comfort and resilience
- Specifically designed for employee work stations
- Use for cashier stations, hotel front desks, pharmacies or retail work counters

### SPECIFICATIONS

**Standard Sizes:** 2' x 3' 3' x 5'

**Roll Sizes:** 2' x 30' 3' x 30' 4' x 30'

**Total Customization:** Up to 30'

**Thickness:** 7/8"

**Colors:** Steel Gray, Black

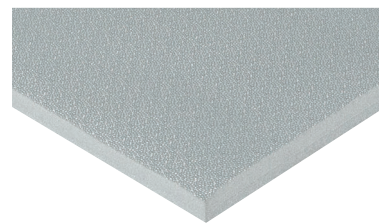
**WARRANTY**  
Total Confidence



Textured surface



Zedlan foam

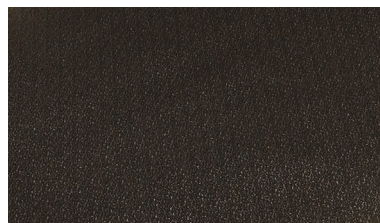


Beveled edges



# #440/#445 Comfort-King

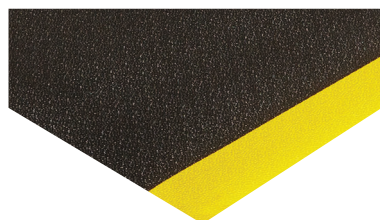
DRY AREA



Textured surface



Zedlan foam



Tapered edges

## FEATURES

- Patented Zedlan Foam outwears other foam products by nearly three to one
- Anti-microbial additives to help prevent mold, mildew, and bacterial growth
- Use for work stations, finishing/assembly stations, cashier stations or pharmacies

## SPECIFICATIONS

**Standard Sizes:** 2' x 3' 3' x 5' 3' x 12'

**Roll Sizes:** 2' x 60' 3' x 60' 4' x 60' 6' x 60'\*

*\*Not available with yellow borders*

**Total Customization:** Up to 60'

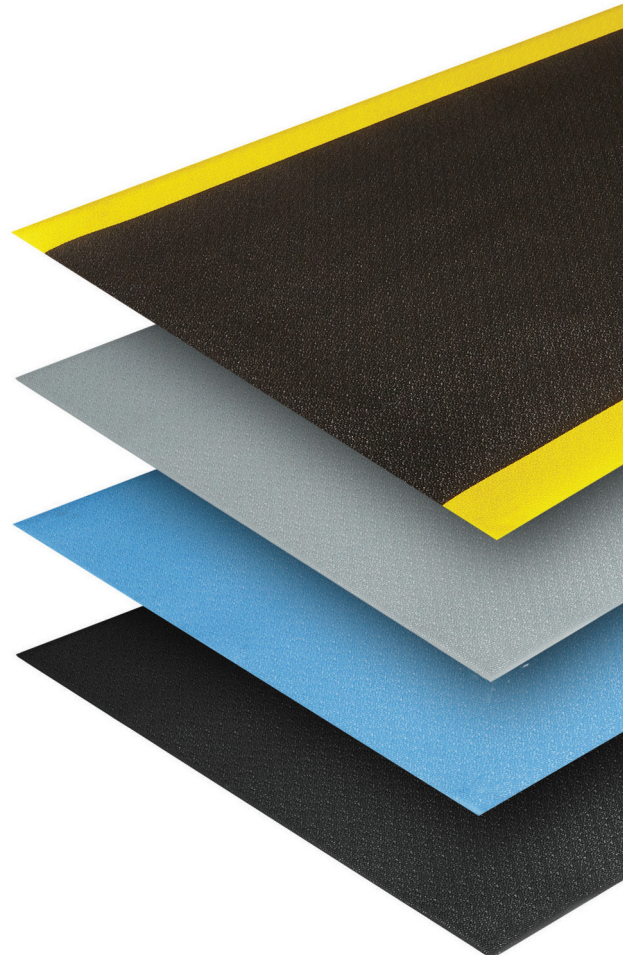
**Thickness:**

**#440 - Standard** – 3/8"

**#445 - Supreme** – 1/2" provides 33% more comfort

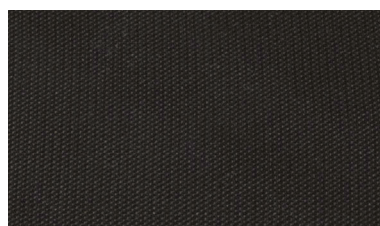
**Colors:** Black & Yellow, Steel Gray, Royal Blue, Black

**WARRANTY**  
Total Confidence



# #649 Para-Mount

DRY AREA



Textured surface



100% Nitrile rubber



Beveled edges

## FEATURES

- Patented nitrile rubber construction resists water, oil, and solvents
- Anti-microbial properties help prevent mold, mildew, and bacterial growth
- Nitrile rubber properties allow for an easy-to-clean product
- For use in virtually any work station, wet or dry

## SPECIFICATIONS

**Standard Sizes:** 2' x 3' 3' x 5'  
3' x 10'

**Thickness:** 3/4"

**Colors:** Black

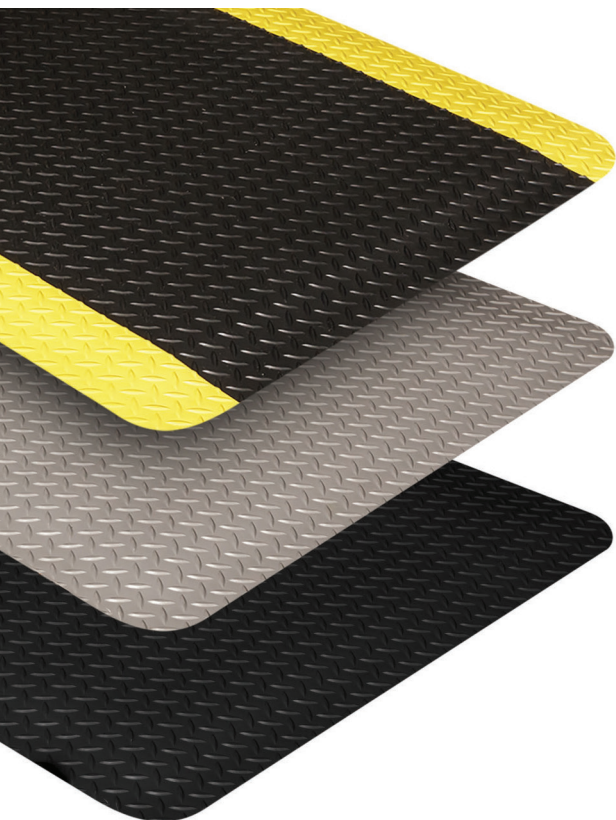
**WARRANTY**  
Total Confidence





## #500/#505 Industrial Deck Plate

DRY AREA



### FEATURES

- Deck plate surface fused to an industrial grade PVC foam backing offers durability and comfort
- Durable slip-resistant surface tolerates cart traffic
- Use for finishing stations, assembly stations or work stations

### SPECIFICATIONS

**Standard Sizes:** 2' x 3'    3' x 5'    3' x 12'

**Roll Sizes:** 2' x 75'    3' x 75'    4' x 75'

**Total Customization:** 2', 3', 4' widths

**Thickness:**

**#500 - Standard** – 9/16"  
(30% recycled content)

**#505 - Ultra** – 7/8" provides 50% more comfort  
(20% recycled content)

**Colors:** Black & Yellow, Gray, Black

### WARRANTY

Total Confidence



Deck plate surface



Industrial grade foam



Rounded corners and beveled edges

## #580 Spark-Safe

DRY AREA



### FEATURES

- Specially formulated spark-resistant rubber surface (passes FMVSS302) repels sparks and hot metal shards
- Durable industrial-grade foam base provides excellent anti-fatigue relief
- Use for machine shops, assembly lines, steel mills or maintenance departments

### SPECIFICATIONS

**Standard Sizes:** 2' x 3'    3' x 5'    3' x 12'

**Roll Sizes:** 2' x 75'    3' x 75'    4' x 75'

**Total Customization:** Lengths up to 75'

**Thickness:** 1/2"

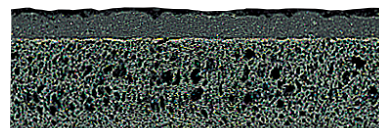
**Colors:** Black

### WARRANTY

Total Confidence



Spark-resistant rubber top surface



Industrial grade foam



Rounded corners and beveled edges



## #685 Safety-Step Solid-Top

DRY AREA



Solid rubber



Rubber nubs on underside



Modular built-in connectors

### FEATURES

- Solid rubber interlocking system allows for unlimited length and width onsite configurations (1' increments)
- Optional snap-on ramps available in black or yellow
- Use for factory work stations, large work cells or assembly lines

### SPECIFICATIONS

**Standard Sizes:** 3' x 3'

**Total Customization:** Up to 12' x 30'

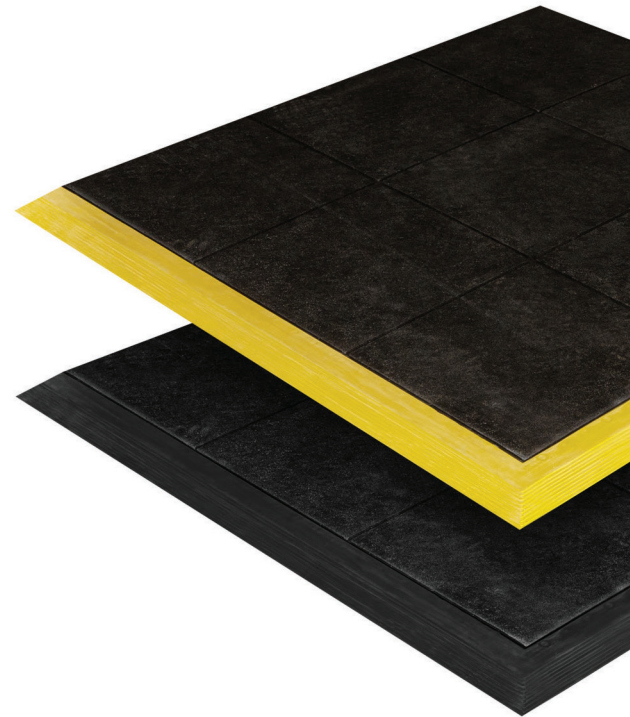
**Thickness:** 5/8"

#### Colors:

Black with built in connectors, Yellow ramp or beveled black available

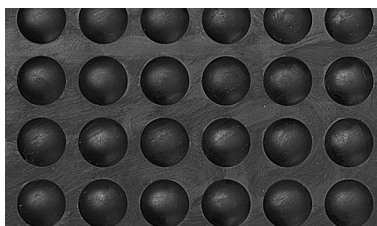
### WARRANTY

**Total Confidence**



## #695 Yoga-Flex

DRY AREA



Bubble-top surface



Industrial grade rubber



Interlocking design with beveled edges

### FEATURES

- High/Low bubble surface encourages micro-movements that reduce fatigue and muscle pain
- Interlocking system allows for unlimited length of matting (47" increments)
- Use for factories, work stations, finishing / assembly stations or shipping and packaging areas

### SPECIFICATIONS

**Standard Sizes:**

**Mat:** 2' x 3'

**Modular Center:** 35" x 47"

**Modular End:** 35" x 47"

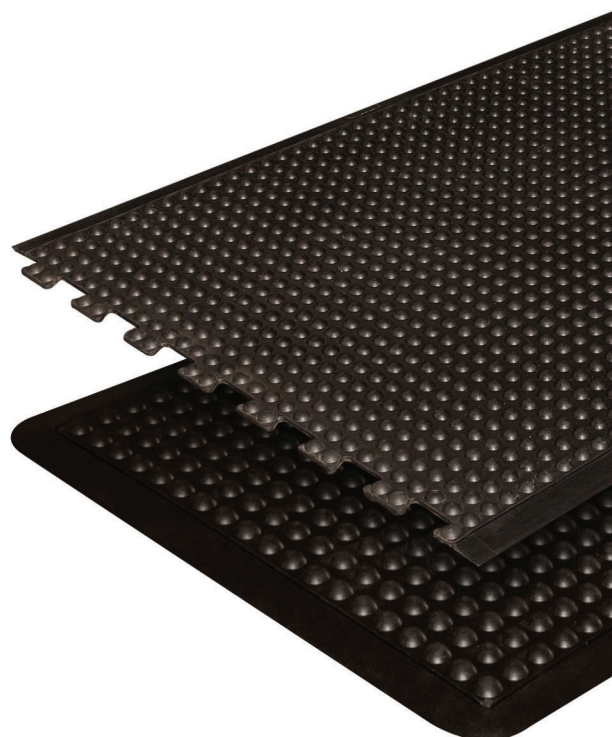
**Total Customization:** Unavailable

**Thickness:** 1/2"

**Colors:** Black

### WARRANTY

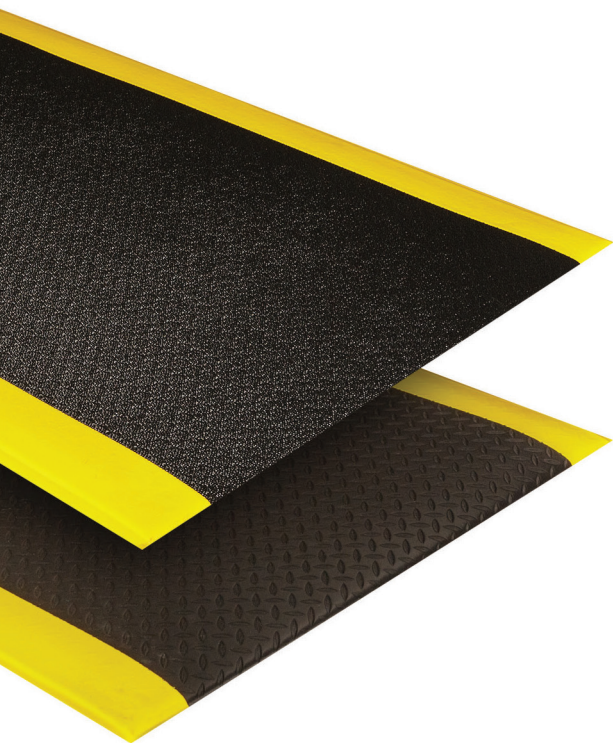
**Total Confidence**





## #520/#522 Wear-Bond Tuff-Spun

DRY AREA



### FEATURES

- Wear-Bond process molecularly bonds foam injected PVC top surface with industrial-grade foam, creating greater overall comfort than rigid PVC/rubber-type surfaces
- Use for assembly stations, packaging areas, service counters or cashier stations

### SPECIFICATIONS

**Standard Sizes:** 2' x 3' 3' x 5' 3' x 12'

**Roll Sizes:** 2' x 75' 3' x 75' 4' x 75'

**Total Customization:** 2', 3', 4' widths

**Thickness:** 9/16"

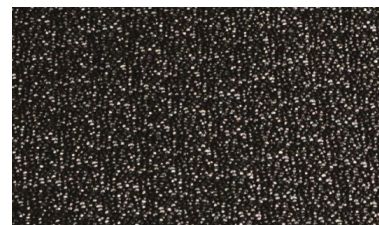
#### Colors:

**#520 Deck-Top Surface:** Black & Yellow, Black

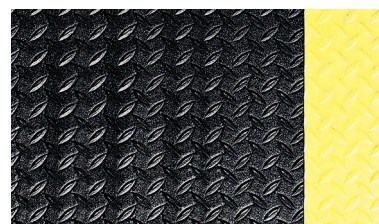
**#522 Pebble Surface:** Black & Yellow, Black, Gray

### WARRANTY

Total Confidence



#522 Foam injected PVC  
pebble embossed surface



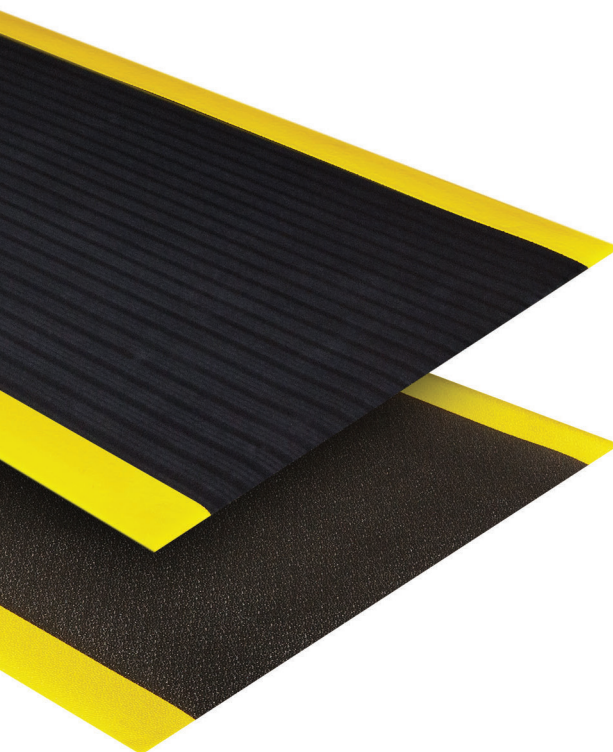
#520 Foam injected PVC  
deck-top surface



Industrial grade foam

## #410/#411/#414/#430/#431/#432 Tuff-Spun Foot-Lover

DRY AREA



### FEATURES

- Closed-cell PVC foam optimizes economical comfort and fatigue relief
- Beveled edges help reduce tripping hazards
- Use for service counters, mailrooms, cashier stations or warehousing/packaging stations

### SPECIFICATIONS

**Standard Sizes:** 2' x 3' 3' x 5' 3' x 12'  
27" x 3' \*Only available in 3/8"

**Roll Sizes:** 2' x 60' 3' x 60' 4' x 60'  
6' x 60' \*

**Total Customization:** Up to 60'

**Thickness:** #410, #411, #414: 3/8"

#430, #431, #432: 5/8"\*

\*Not available with yellow border

#### Colors:

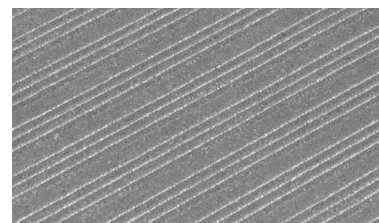
**#410, #430 Ribbed Surface:** Black & Yellow, Black, Gray

**#411, #431 Pebble Surface:** Black, Gray

**#414, #432 Diamond Surface:** Black & Yellow, Black, Gray

### WARRANTY

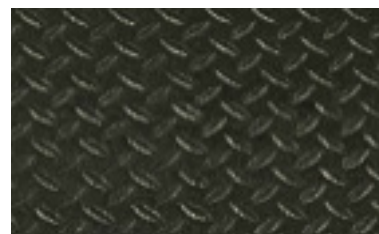
Total Confidence



#410/#430 Ribbed embossed surface



#411/#431 Pebble embossed surface



#414/#432 Diamond embossed surface





# Wet / Oily Environments

Industrial and commercial settings bring plenty of flooring challenges. Add water, chemicals, or any other fluids to the already complicated environment, and your safety and health concerns multiply ... quickly.

To help you address those concerns, we've built one of the most comprehensive and proven wet/oily environment matting lines available. We offer both solid surface and drainage mats and that's just the start.

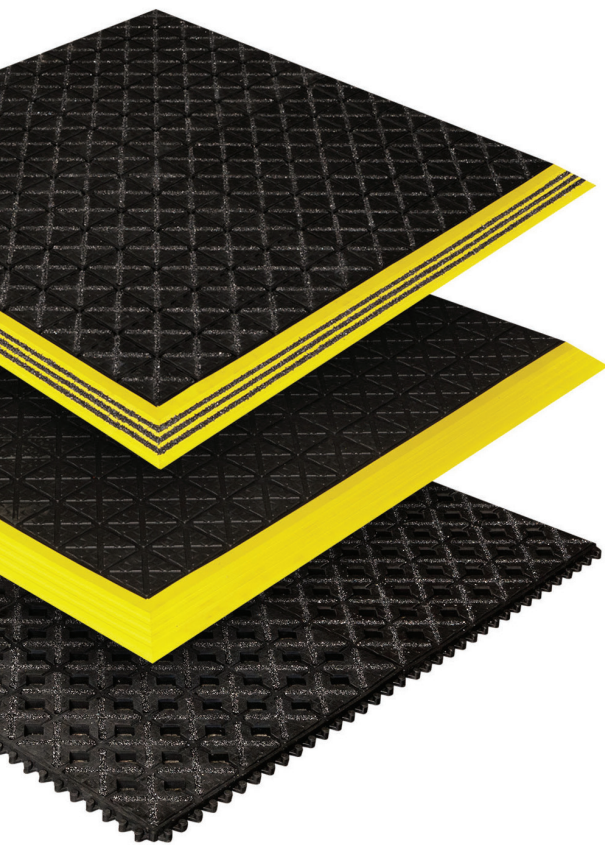
Need grit for extra traction? Nitrile infused mats that can handle industrial fluids without breaking down? Perforated surfaces to move fluid through quickly and reduce slip/fall hazards? Modular mats for easy on-site custom solutions? Pick one, or tell us your needs and we'll problem-solve with you. Chances are we've got what you're looking for.

Ergo X-Treme p.12



**#775/#776/#777/#779 Ergo X-Treme**

OILY AREA

**FEATURES**

- 100% molded nitrile rubber offers ten times the lifespan of standard rubber mats
- Aggressively patterned top surface ensures maximum foot traction in slippery environments
- Use for factories, machine shops, auto manufacturers, power transmission facilities

**SPECIFICATIONS****Standard Sizes:** 18" x 18" tiles (8 per case)**Pre-Constructed Mats:**

3' x 4 1/2' 3' x 6' 3' x 9'

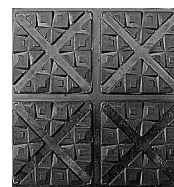
**Total Customization:** Up to 9' x 12'**Thickness:** 3/4"**Finish:** Safety ramps available with or without grit**Colors:**

#775: Black solid-top surface

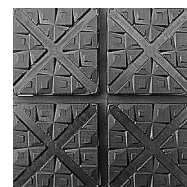
#776: Black with drainage slots

#777: Black with drainage slots and Grit-Safe

#779: Black with open drainage and Grit-Safe

**WARRANTY****Total Confidence**

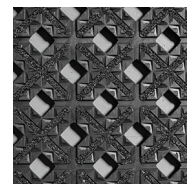
#775 Solid Top



#776 Drainage Slots



#777 Drainage slots and Grit-Safe



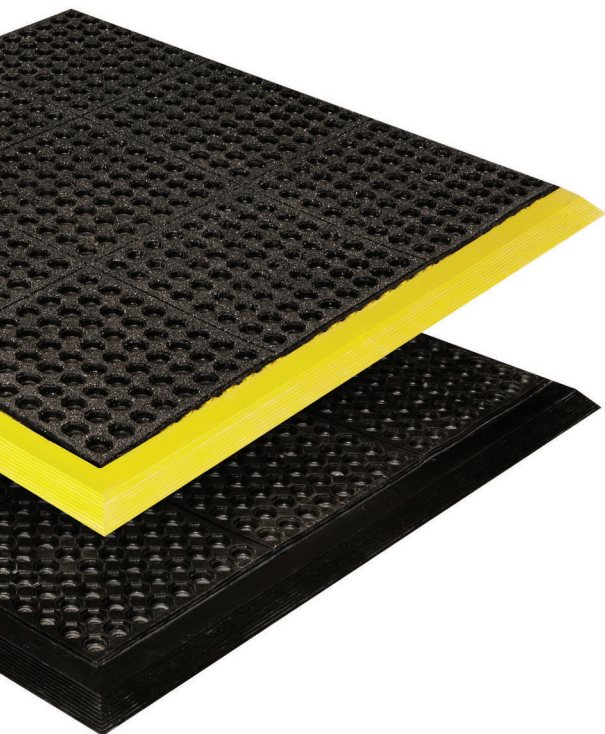
#779 Open drainage and Grit-Safe



Interlocking system allows for unlimited length and width customization

**#752/#753 Dura-Step II**

OILY AREA

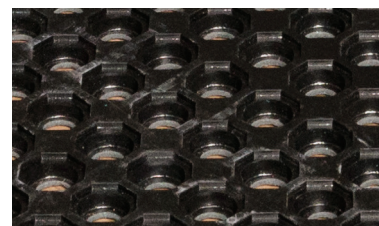
**FEATURES**

- 100% molded nitrile rubber offers resistance to a wide range of oils and fluids
- High-traction Grit-Safe coating provides extreme slip resistance and added safety in highly oily areas
- Use for machine shops, auto manufacturers, power transmission facilities or garages – anywhere there are greasy work stations

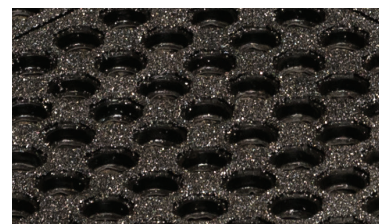
**SPECIFICATIONS****Standard Sizes:** 3' x 3'**Total Customization:** Up to 12' wide**Thickness:** 5/8"**Finish:** Safety ramps available in black or yellow**Colors:**

#753: Black with Grit-Safe

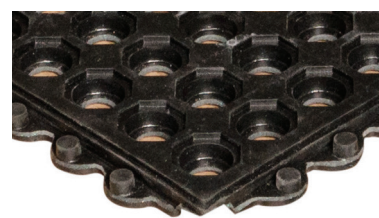
#752: Black

**WARRANTY****Total Confidence**

#752 Black without Grit-Safe



#753 Black with Grit-Safe

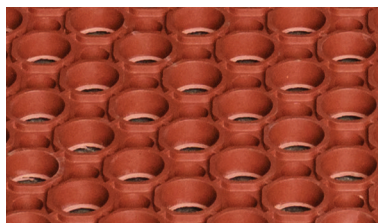


Interlocking system allows for unlimited length and width configurations



## #630/#635/#636 Safewalk

WET / OILY AREA



#636 Nitrile rubber blend terra cotta



#635 General purpose rubber



#630 Pre-assembled yellow ramps available

### FEATURES

- Terra Cotta nitrile rubber blend offers resistance to a wide range of greases
- Heavy-duty rubber allows easy drainage of liquid and debris
- Use for industrial work stations, food processing, kitchens, bars or cafeterias

### SPECIFICATIONS

**Standard Sizes:** 3' x 5'

**3 Sides Pre-assembled\*:**

26" x 40" 38" x 40" 38" x 64 38" x 124"

**4 Sides Pre-assembled\*:**

28" x 40" 40" x 40" 40" x 64" 40" x 124"

*\* general purpose (black) only*

**Total Customization:** Unavailable

**Thickness:** 7/8"

**Finish:** #630 Pre-assembled yellow ramps available

**Colors:**

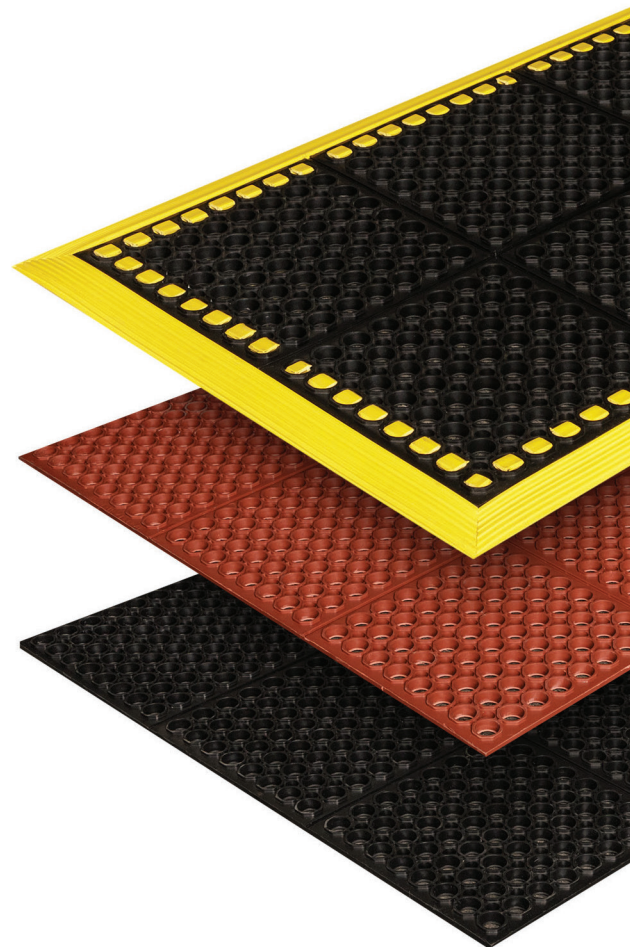
#630 Black with pre-assembled Yellow ramps

#635 Black

#636 Blend Terra Cotta

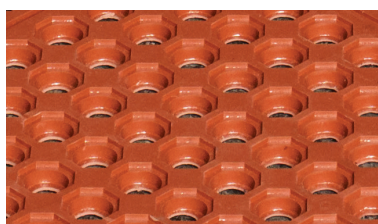
**WARRANTY**

**Total Confidence**

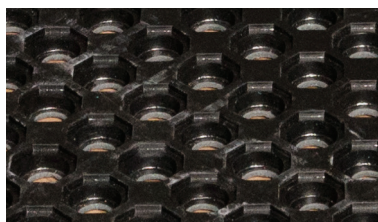


## #680/#681 Safety-Step Perforated

WET / OILY AREA



#681 Nitrile rubber blend terra cotta



#680 General purpose rubber



5/8" thick nibbed backing

### FEATURES

- Terra Cotta nitrile rubber blend offers resistance to a wide range of greases
- Heavy-duty modular rubber allows easy drainage of liquid and customization of sizes
- Use for factories, irregularly-sized work stations, sanding stations, grinding stations or food service

### SPECIFICATIONS

**Standard Sizes:** 3' x 3'

**Total Customization:** Up to 12' x 30'

**Thickness:** 5/8"

**Finish:** Beveled male/female ramps available

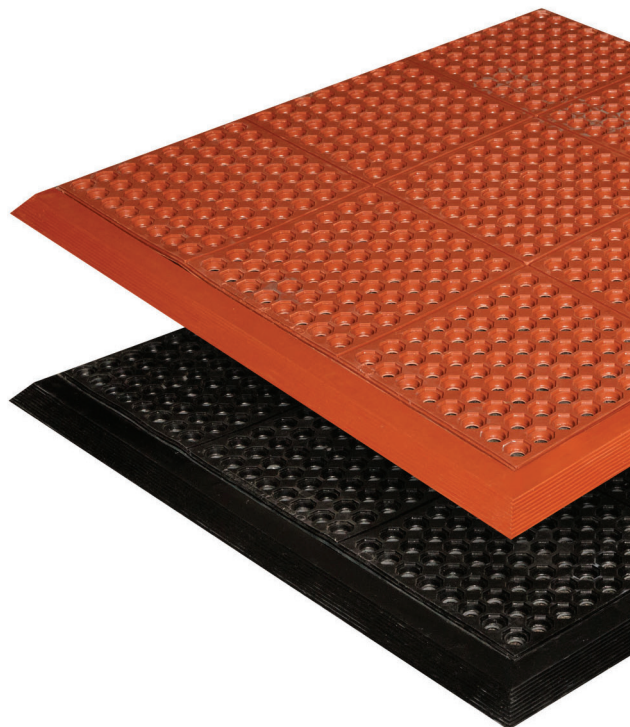
**Colors:**

#681 Nitrile Rubber Blend Terra Cotta (grease resistant, 15% recycled)

#680 Rubber Black (general purpose, 47% recycled)

**WARRANTY**

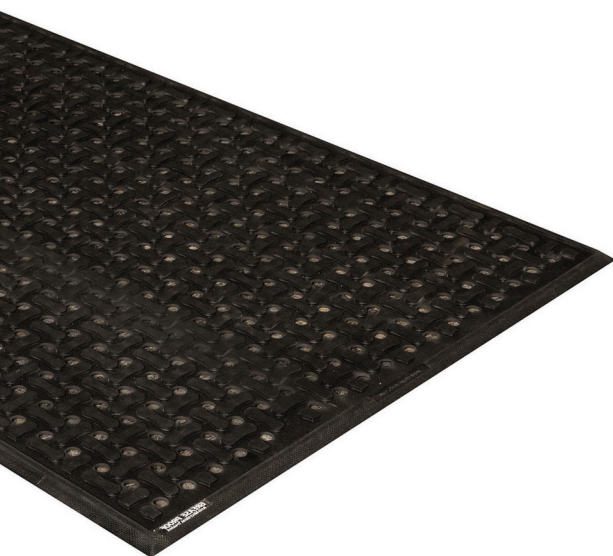
**Total Confidence**





## #648 Safe-Flow Plus

OILY AREA



### FEATURES

- 100% nitrile rubber offers maximum resistance to water, oil, grease, chemicals and animal fats
- Contains anti-microbial agent that inhibits the growth of odor-causing bacteria and fungi
- Use for food processing and packaging, kitchens, industrial work stations or freezers / cold storage

### SPECIFICATIONS

**Standard Sizes:** 23" x 35"  
34" x 54 1/2"  
34" x 113"

**Total Customization:** Unavailable

**Thickness:** 3/8"

**Colors:** Black

### WARRANTY

**Total Confidence**



100% Nitrile rubber with drainage holes



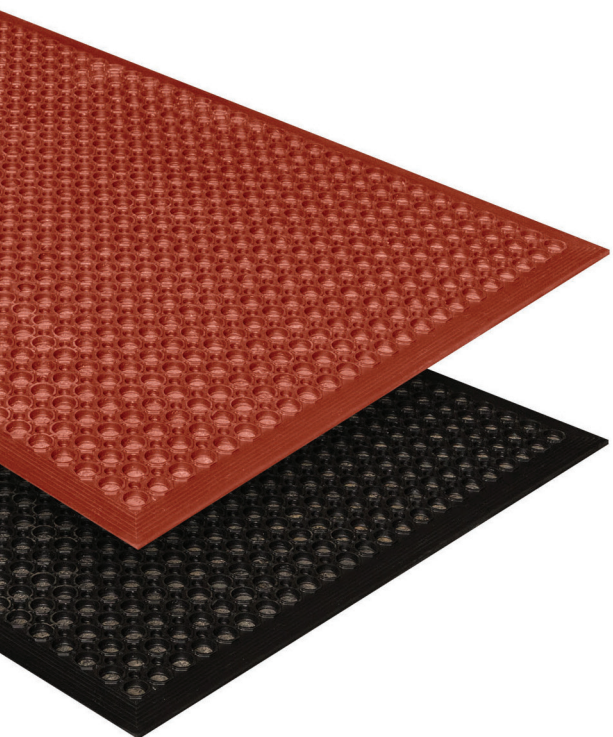
3/8" Thick



Framed design to contain liquids

## #645/#646 Safewalk-Light

WET / OILY AREA



### FEATURES

- Low profile mat with molded beveled borders for increased safety
- Raised surface rings provide excellent traction
- Use for bars / dishwashing areas, food processing / packaging or laundry rooms

### SPECIFICATIONS

**Standard Sizes:** 3' x 5'    3' x 10'  
3' x 15'    3' x 20"

10' length mats and longer have a seam every 5'

**Total Customization:** Unavailable

**Thickness:** 1/2"

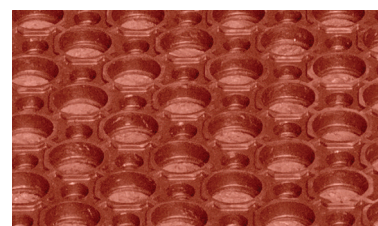
**Colors:**

**#645** Rubber Black (general purpose)

**#646** Nitrile Rubber Blend Terra Cotta (grease resistant)

### WARRANTY

**Total Confidence**



#646 Nitrile rubber blend terra cotta



#645 General purpose rubber

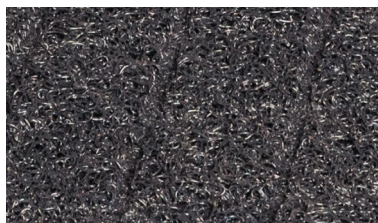


1/2" Thick

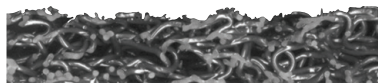


## #133 Diamond-Deluxe with Grit-Safe

OILY AREA



Black diamond embossed pattern



1/2" Thick



Lengths cuts up to 40'

### FEATURES

- Durable open loop design elevates workers while allowing fluids to flow through
- Specially formulated oil-resistant vinyl resists water and most oils
- Use for factories / garages, work stations, oil changing pits, steel mills or outdoor entrances

### SPECIFICATIONS

**Standard Sizes:** 3' x 5'

**Roll Sizes:** 3' x 40' 4' x 40'

**Total Customization:** Up to 40'

**Thickness:** 1/2"

**Colors:** Black

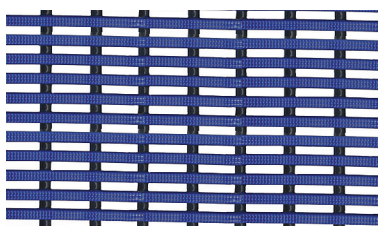
### WARRANTY

Total Confidence



## #667 Sani-Tred

WET AREA



Slip-resistant, embossed surface



3/8" Thick



2', 3', 4' wide rolls

### FEATURES

- Open-grid construction made from non-porous extruded PVC
- Sanitized anti-bacterial and anti-fungal additives
- Use for health clubs, showers, spas, swimming pools, saunas and Jacuzzis or where barefoot traffic is extensive

### SPECIFICATIONS

**Roll Sizes:** 2' x 40' 3' x 40' 4' x 40'

**Total Customization:** Unavailable

**Thickness:** 3/8"

**Colors:**

Ocean Blue, Charcoal Gray, Mulberry Red

### WARRANTY

Total Confidence





# Anti-Static (ESD), Non-Conductive & Runners

Whether you require anti-static matting for technical settings, non-conductive matting for high-voltage applications, or matting runners to protect your floor, we've developed a variety of products to meet the needs of these specific environments.

The discharge of static electricity or exposure to high-voltage equipment can greatly increase safety and health risks in any number of work environments. Our extensive line of Anti-Static (ESD) and Non-Conductive Matting can quickly provide the necessary safeguards for workers and equipment. Our mats are tested to withstand rigorous standards and extreme conditions, from corporate "clean room" applications to the most demanding military applications.

Keeping static and electrical sensitive work areas under control is one more way we help build safer and more productive environments for your workforce.

Corrugated-Switchboard Runner p 18





## #930 Electrically Conductive Deck Plate

ANTI-STATIC



Deck top surface



PVC foam backing

Stock mats include one installed ground cord

### FEATURES

- Static dissipative surface resistivity of  $10^6$  ohms per square
- PVC foam backing allows good anti-fatigue relief while standing
- Use for computer work stations and terminals, sensitive electronic equipment or electrical rooms

### SPECIFICATIONS

**Standard Sizes:** 2' x 3' 3' x 5' 3' x 12'

**Roll Sizes:** 3' x 75'

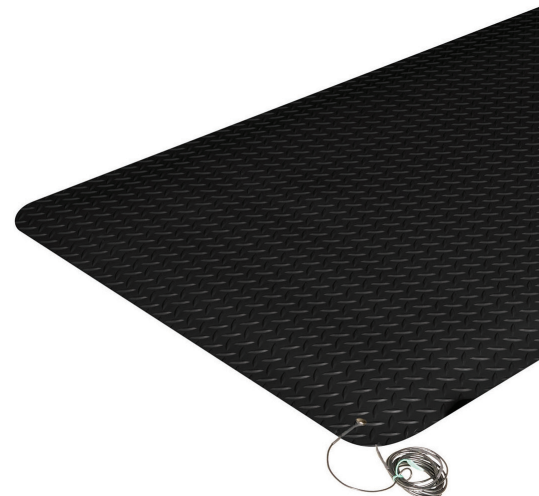
**Total Customization:** Available / Custom cuts need one ground cord per 10' (sold separately)

**Thickness:** 9/16"

**Colors:** Black

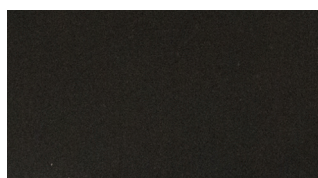
### WARRANTY

**Total Confidence**



## #920 Stat-Control

ANTI-STATIC



Smooth vinyl surface



PVC foam backing

Stock mats include one installed ground cord

### FEATURES

- Static dissipative surface resistivity of  $10^7$  ohms per square
- PVC foam backing allows good anti-fatigue relief while standing
- Use for computer work stations, cashier stations or test / electronic stations

### SPECIFICATIONS

**Standard Sizes:** 2' x 3' 3' x 5' 3' x 12'

**Roll Sizes:** 3' x 75'

**Total Customization:** Available / Custom cuts need one ground cord per 10' (sold separately)

**Thickness:** 1/2"

**Colors:** Black

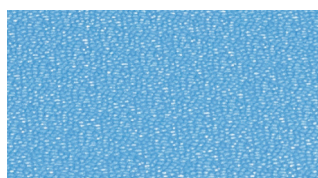
### WARRANTY

**Total Confidence**

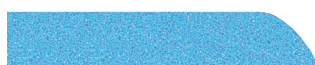


## #910 Comfort-King Anti-Static

ANTI-STATIC



Textured surface



Zedlan foam

Stock mats include one installed ground cord

### FEATURES

- Static dissipative resistivity of  $10^9$  ohms per square
- Highly energized Zedlan foam that combines softness, resilience and durability for exceptional relief
- Use for computer work stations, electronic / testing stations or laboratories

### SPECIFICATIONS

**Standard Sizes:** 2' x 3' 3' x 5' 3' x 12'

**Roll Sizes:** 2' x 60' 3' x 60' 4' x 60' 6' x 60'

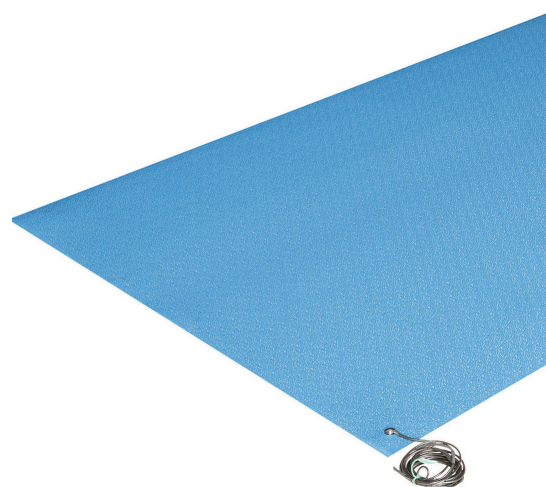
**Total Customization:** Available / Custom cuts need one ground cord per 10' (sold separately)

**Thickness:** 3/8"

**Colors:** Royal Blue, Black, Steel Gray

### WARRANTY

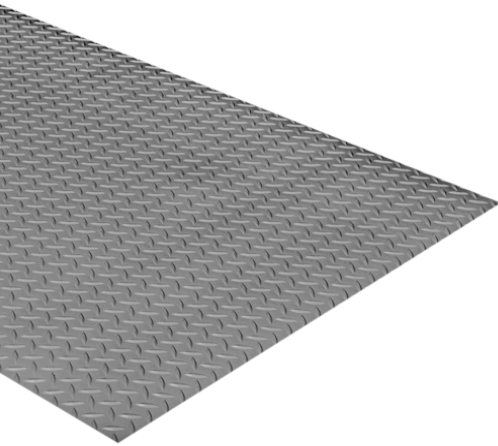
**Total Confidence**





## #960 Military Deck Plate - Switchboard Runner

NON-CONDUCTIVE | HIGH-VOLTAGE APPLICATIONS



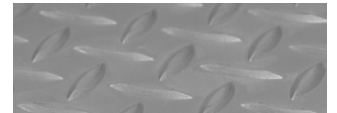
### FEATURES

- Tested for performance following sulfuric acid immersion, oxygen bomb aging and UV light exposure
- Flame-resistant; certified to Mil Std-1623
- Dielectric rating: 30,000 volts
- Use for factories / finishing/assembly stations, military installations or near switchboards and other electrical equipment

### SPECIFICATIONS

**Roll Sizes:** 3' x 75'**Total Customization:** Unavailable**Thickness:** 3/16"**Colors:** Gray

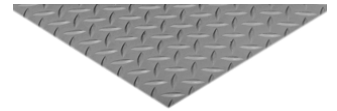
### WARRANTY

**Total Confidence**

Deck top surface



3/16" Thick



3' x 75'

## #965 Military Smooth - Switchboard Runner

NON-CONDUCTIVE | HIGH-VOLTAGE APPLICATIONS



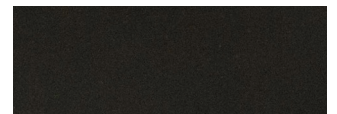
### FEATURES

- Flame-resistant; certified to Mil Std-1623
- Wear resistance: ASTM-D-1242
- Dielectric rating: 30,000 volts
- Use for factories / finishing/assembly stations, military installations or near switchboards and other electrical equipment

### SPECIFICATIONS

**Roll Sizes:** 3' x 75'**Total Customization:** Unavailable**Thickness:** 1/8"**Colors:** Black

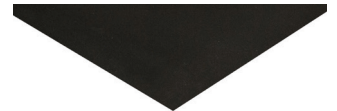
### WARRANTY

**Total Confidence**

Smooth top surface



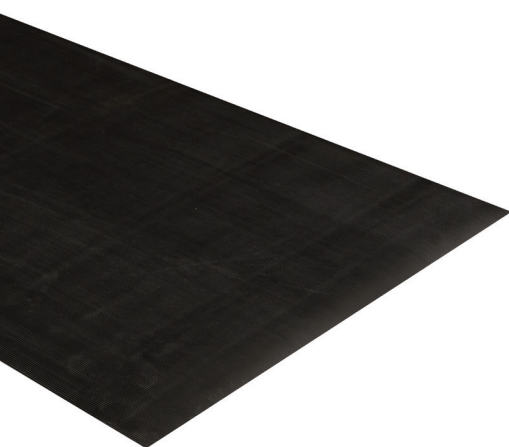
1/8" Thick



3' x 75'

## #950 Corrugated - Switchboard Runner

NON-CONDUCTIVE | HIGH-VOLTAGE APPLICATIONS



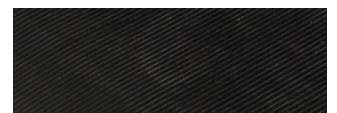
### FEATURES

- Dielectric rating: 30,000 volts
- Meets ASTM standards: D178, Type 2, Class 2
- Meets all optional ASTM standards for resistance to ozone, flames and oils
- Use for computer workstations, fuse boxes, control panels or switchboards

### SPECIFICATIONS

**Roll Sizes:** 3' x 75'**Total Customization:** Length cuts up to 75'**Thickness:** 1/4"**Colors:** Black

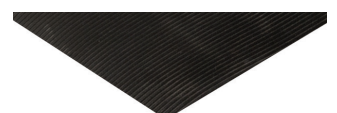
### WARRANTY

**Total Confidence**

Corrugated top surface



1/8" Thick



3' x 75'



## #820 Pro-Tekt

### RUNNERS



1/8" Thick

#### FEATURES

- Economical, pebble surfaced vinyl foam runner allows for a variety of uses
- Cost effective, slip-resistant and chemical-resistant floor protection

#### SPECIFICATIONS

**Roll Sizes:** 3' x 60' 4' x 60' 6' x 60'

**Total Customization:** Length cuts up to 60'

**Thickness:** 1/8"

**Colors:** Black

**WARRANTY** Total Confidence



## #850 Deck Plate

### RUNNERS



5/32" Thick

#### FEATURES

- Distinctive raised-diamond pattern increases traction and durability
- Easy to clean vinyl surface is resistant to most common chemicals

#### SPECIFICATIONS

**Roll Sizes:** 2' x 75' 3' x 75' 4' x 75'

**Total Customization:** Length cuts up to 75'

**Thickness:** 5/32"

**Colors:** Black, Gray, Black & Yellow

**WARRANTY** Total Confidence



## #800 Sta-Kleen

### RUNNERS



1/8" Thick

#### FEATURES

- Industrial grade round-rib vinyl runner
- Surface resists normal acids, alkalis, oil, grease and most organic solvents, if removed quickly

#### SPECIFICATIONS

**Roll Sizes:** 2' x 105' 3' x 105' 4' x 105'

**Total Customization:** Length cuts up to 105'

**Thickness:** 1/8"

**Colors:** Black

**WARRANTY** Total Confidence



## #840 Corrugated Rubber

### RUNNERS



1/8" Thick

#### FEATURES

- Durable V-groove rubber surface is slip-resistant
- Resists abrasion

#### SPECIFICATIONS

**Roll Sizes:** 2' x 75' 3' x 75'

**Total Customization:** Length cuts up to 75'

**Thickness:** 1/8"

**Colors:** Black

**WARRANTY** Total Confidence





# Entrance and Logo Mats

In addition to just looking great, entry mats work harder than you might imagine. Entrance matting helps minimize the accumulation of dirt in your building. A proper arrangement of 15 linear feet of entrance matting will prevent up to 80% of the accumulated dirt from spreading onto your floors. And, that's a lot of dirt. Up to 24 pounds can be tracked in by just 1,000 people over a 20-day work period.

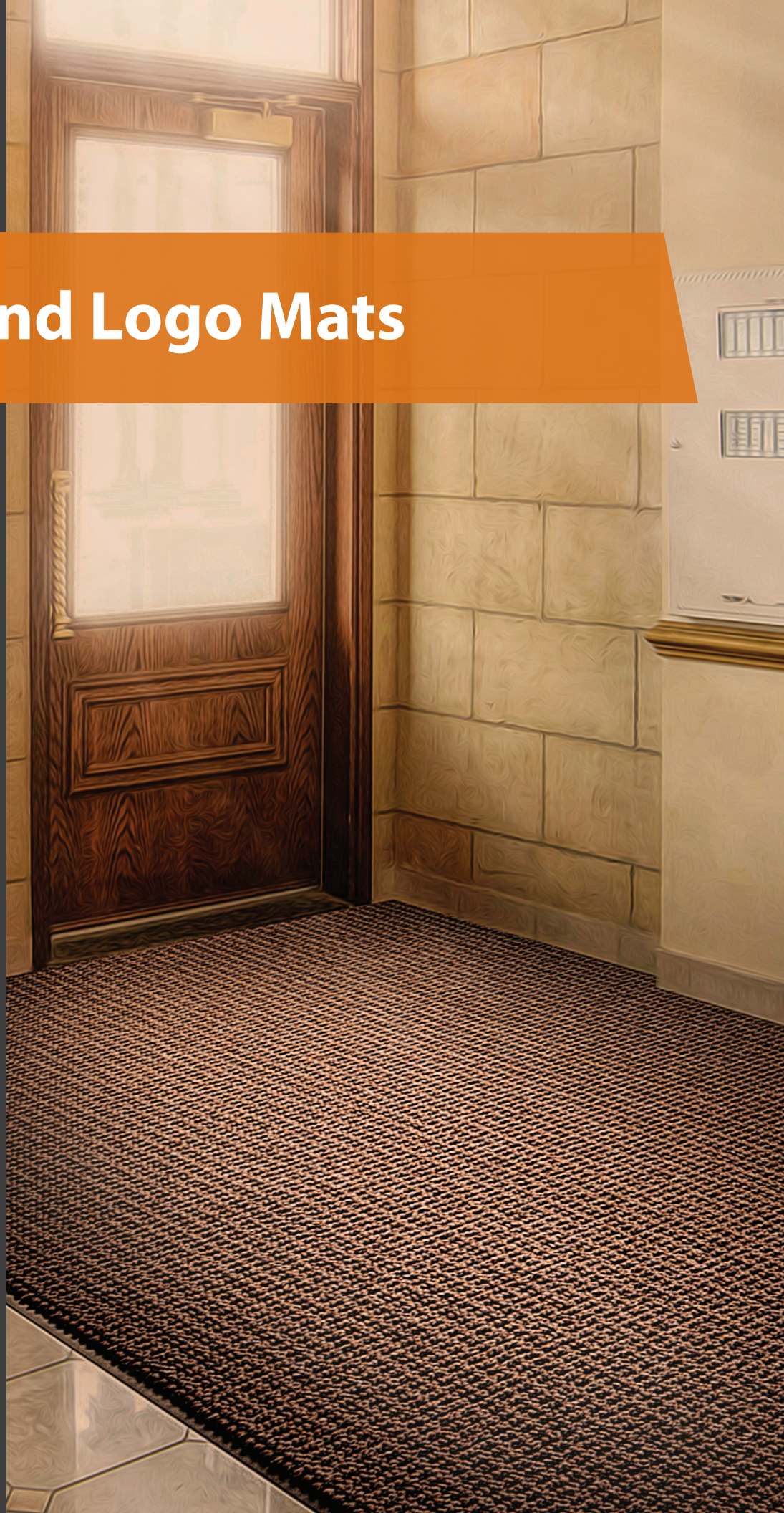
In addition to fighting dirt and dust, entry mats also:

- Reduce maintenance costs
- Protect floors
- Improve air quality
- Enhance the look of your work place
- Diminish the risk of slips and accidents

Need more information?

Go to **[www.crownmats.com](http://www.crownmats.com)** for the bigger scoop on dirt in the workplace and how Crown Mats can help.

Oxford Elite p.21





## #175 Jasper

OUTDOOR | SCRAPER



Cut-pile nylon fibers

### FEATURES

- Cut pile mat made of strong nylon scraping fibers
- Slim profile facilitates the opening of doors
- For outdoor/indoor entrance and lobby with medium traffic

### SPECIFICATIONS

**Standard Sizes:** 2'x3' 3'x4' 3'x5' 3'x6' 3'x8'  
3'x10' 4'x6' 4'x8' 4'x10' 6'x10'

**Roll Sizes:** 3' x 60' 4' x 60' 6' x 60'

**Total Customization:** Up to 11'9" x 60'

**Colors:** Black, Gray

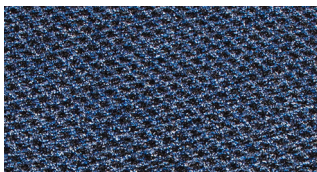
### WARRANTY

Total Confidence



## #265 Oxford Elite

SCRAPER / WIPER



Olefin fiber mix



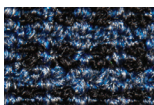
Black/Gray



Black/Brown



Black/Burgundy



Black/Blue

### FEATURES

- Heavyweight loop pile combined with aggressive nylon fibers exceeds the performance of similar scraper/wiper mats
- Attractive pattern hides dirt and keeps your entrance clean

### SPECIFICATIONS

**Standard Sizes:** 2' x 3' 3' x 4' 3' x 5'  
3' x 10' 4' x 6' 4' x 10'

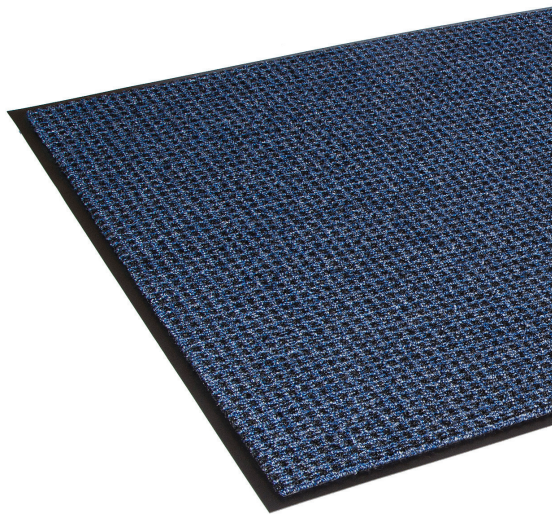
**Roll Sizes:** 3' x 60' 4' x 60' 6' x 60'

**Total Customization:** Up to 11'9" x 60'

**Colors:** Black/Burgundy, Black/Blue, Black/Gray, Black/Brown

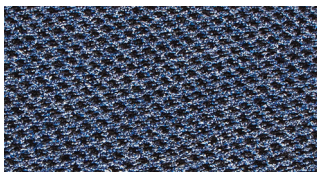
### WARRANTY

Total Confidence



## #360 Oxford

WIPER



Heavy loop pile fibers



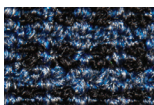
Black/Gray



Black/Brown



Black/Burgundy



Black/Blue

### FEATURES

- Heavyweight loop pile mat combines performance and appearance like no other on the wiper market
- Attractive pattern hides dirt and keeps your entrance clean

### SPECIFICATIONS

**Standard Sizes:** 2' x 3' 3' x 4' 3' x 5'  
3' x 10' 4' x 6' 4' x 10'

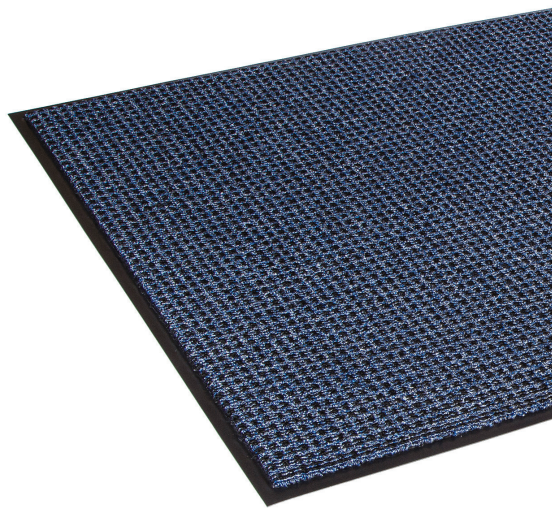
**Roll Sizes:** 3' x 60' 4' x 60' 6' x 60'

**Total Customization:** Up to 11'9" x 60'

**Colors:** Black/Burgundy, Black/Blue, Black/Gray, Black/Brown

### WARRANTY

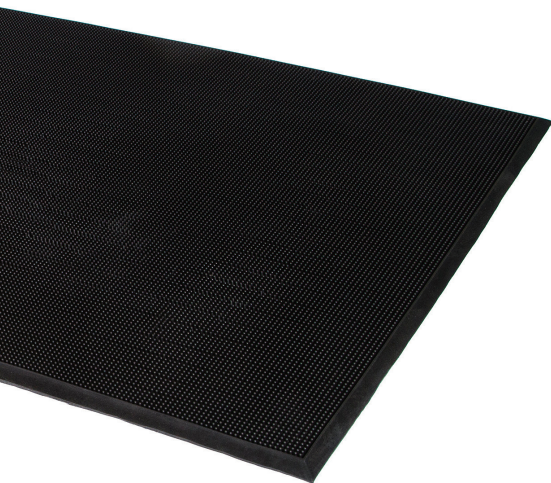
Total Confidence





## #100 Mat-A-Dor

OUTDOOR | SCRAPER



### FEATURES

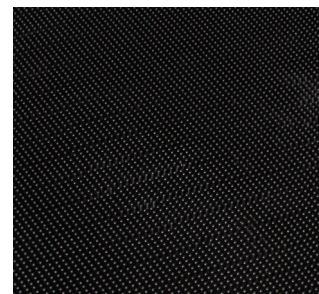
- Contains 60% more "fingers" than standard fingertip mats, for outstanding scraping action
- Beveled edge reservoir retains up to 1 gallon of liquid per square yard

### SPECIFICATIONS

**Standard Sizes:** 24" X 32" 32" X 39" 36" X 72"**Total Customization:** Unavailable**Thickness:** 5/8"**Colors:** Black

### WARRANTY

Total Confidence



Rubber mat with corrugated back and molded edging

## #225 Tire-Track

INDOOR | SCRAPER / WIPER



### FEATURES

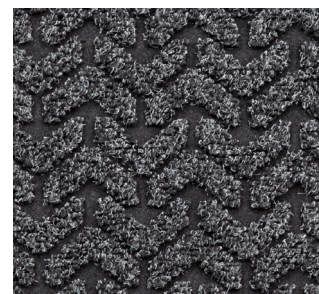
- Industrial strength carpet can hold up to 2 gallons of liquid per square yard
- Unique pattern offers effective scraping action and long lasting appearance
- ThermoGrip backing offers extreme durability and superior floor protection

### SPECIFICATIONS

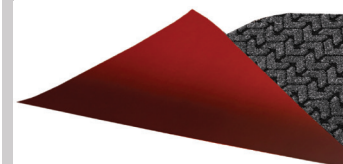
**Standard Sizes:** 6' x 6' 6' x 8'**Thickness:** 3/8"**Colors:** Charcoal

### WARRANTY

Total Confidence



Bi-level pattern with heavy pile surface



ThermoGrip backing offers superior floor protection.



## #065 Super - Berber Inlay

SCRAPER / WIPER

### FEATURES

- 100% Solution Dyed Polypropylene Berber, UV, and abrasion-resistant
- Maximum Durability All-weather rubber backing

### SPECIFICATIONS

**Standard Sizes:** 2' x 3' 3' x 4' 3' x 5' 3' x 6' 3' x 8' 3' x 10'  
3' x 12' 4' x 6' 4' x 8' 4' x 10' 4' x 12' 4' x 14'

**Roll Sizes:** 4' x 16' 4' x 18' 4' x 20' 6' x 5' 6' x 6' 6' x 8'  
6' x 10' 6' x 12' 6' x 20'

**Total Customization:** from 2' x 1' up to 13' 2" x 100

**Colors:** Up to 40 Available Colors. No PMS Color Match available.

**Lead Time:** 2-3 weeks after signed proof

Contact Customer Service

### WARRANTY

Total Confidence



## #050 Embossed Anti-Fatigue Mat

ERGONOMIC

### FEATURES

- Improve the efficiency of your work stations with our embossed ergonomic mats
- Available with anti-microbial additive.

### SPECIFICATIONS

**Standard Sizes:** 2' x 3' 3' x 4' 3' x 5'  
3' x 10'

\* FLAT PACKED ON SKID, NO CARTONS

**Total Customization:** Call Customer Service

**Lead Time:** 3-5 weeks

**Thickness:** 3/8" Tuff-Spun 3/8" or 1/2" Zedlan foam

**Colors:** Tuff-Spun: Black, Gray  
Comfort-King: Black, Steel Gray, Royal Blue

### WARRANTY

Total Confidence



## #010 Flocked Mat

WIPER

### FEATURES

- Promote your business and services thanks to our economical mat with its vibrant colors
- Flocking process: nylon fibers electrostatically charged and applied to the carpet surface with adhesive

### SPECIFICATIONS

**Standard Sizes:** 2' x 3' 3' x 4' 3' x 5' 3' x 10'

**Total Customization:** Max 4-color; 4' x 6', 6' x 20' Max logo area 34" x 50"

### WARRANTY

Total Confidence



## #035 HD Jet Print

WIPER

### FEATURES

- Designed to be used indoors in aisles, counters, kiosks, etc.
- Printed directly on nylon surface

### SPECIFICATIONS

**Standard Sizes:** 2' x 3' 3' x 4' 3' x 5' 3' x 10' 4' x 6'  
4' x 8' 5' x 8' 5' x 10' 6' x 10' 6' x 12'

**Roll Sizes:** Unavailable

**Total Customization:** Length/Width cuts up to 6' x 40'

**Finish:** Vinyl backing and borders, Excellent digital reproduction

**Lead Time:** 2-3 weeks after signed proof

**Colors:** Up to 150 available colors

**WARRANTY Total Confidence**





## Care and Maintenance

### Use & Care Instructions – Ergonomic Matting

Regular maintenance of your mats is critical to extend mat life and appearance. It is recommended to develop a regular maintenance schedule. Frequency will depend on traffic and soil conditions.

#### INITIAL MAT USE

- 1| Within a few days of receipt, rolled mats should be unrolled and laid flat.
- 2| Some rubber mats may have an oily or sticky film on them. This is a releasing agent that is inherent to molded mats, not a defect. Simply wash down with a mild detergent or degreaser to remove this film.
- 3| To store mats, roll them up and lay them in a moderate temperature, dry area. Do not stand on end or crush.

#### ERGONOMIC / ANTI-FATIGUE MATS – Vinyl

- A| Shake dirt and debris or sweep with a broom daily to remove surface dirt. Sweep the area underneath the mat before replacing it to remove any dirt or debris that could cause premature wear and reduce slip hazards.
- B| Mats can be washed off with a hose or pressure washer or damp mopped with a nonabrasive, water-based detergent. Let the mat dry completely before allowing foot traffic to resume.

#### ERGONOMIC / ANTI-FATIGUE MATS – Rubber

- A| Shake out dirt and debris by daily flipping the mat over, or by gently sweeping with a broom to remove surface dirt. Sweep the area underneath the mat before replacing it to remove any dirt or debris that could cause premature wear.
- B| Mats can be washed off with a hose or pressure washer or gently scrubbed by hand with a soft brush and a nonabrasive, water-based detergent. Let the mat dry completely before allowing foot traffic to resume. Grease proof or grease resistant mats used in kitchens or oily environments should be cleaned periodically using a water-based detergent and degreaser with a mop or pressure washer to break down excessive grease. **Mats should not be put in a dishwasher.**

**IMPORTANT ! Do not use rotary scrubbers, or other mechanical cleaners or scrubbers to clean.**

**Do not use solvents, harsh detergents, or alkalis directly on the mat. Do not use the mat in areas where these materials are used.**

## How to Order

With a global distribution network, it's easy to put the strength of our matting solutions to work for you. Visit [www.crownmats.com](http://www.crownmats.com) to find the Crown Matting Technologies distributor/rep nearest you. Or, simply call our customer service team at **800-MAT-LINE (628-5463)**. We welcome the opportunity to discuss our products, take your request for a sample, or answer any questions you may have.

## Warranty

#### STANDARD LIMITED LIFE TIME WARRANTY POLICY

New products are warranted against defects in material and workmanship when maintained as instructed in the Use and Care Instructions included with each product. The obligation under this warranty is limited to the original user and to the replacement, repair, or pro-rated refund of said product. This warranty excludes the costs incurred for the installation of the carpet and/or mat. It remains the responsibility of the owner to carry out an inspection of the product prior to the installation.

#### This Warranty Is Not Applicable Under The Following Circumstances:

- 1| Improper use, application, installation or cleaning of the product
- 2| Normal wear
- 3| Use of this product for other than its intended purpose
- 4| Lack of proper maintenance as described in the Use and Care Instructions included with each product
- 5| Products that have been altered in any way

If a problem with a product develops during the warranty period, contact your authorized dealer.

**Please go to [www.crownmats.com](http://www.crownmats.com) for additional warranty information.**



# Chemical Resistance Chart

Please use this chart as a basic guide. In many cases, resistance to these chemical solutions have been evaluated as a result of intermittent exposure rather than constant exposure. If concerned, please request a sample for testing under your conditions.

Page	Product	acetic acid	acetone	animal fat	brake fluid	butyl alcohol	butyl acetate	chlorine (wet)	cutting oil	formaldehyde	gasoline	hydraulic fluid	hydrochloric acid	MEK	mineral oil	motor oil	nitric acid dilute	sodium hydroxide dilute	sulfuric acid 25%	Toluene	trans fluid	vegetable oil	xylene
6	Alleviator	1	4	1	3	2	4	4	4	2	3	2	1	4	2	2	2	2	1	4	2	1	4
7	Comfort-King	1	4	1	3	2	4	4	4	2	3	2	1	4	2	2	2	1	1	4	2	1	4
19	Deck Plate Runners	1	4	1	2	2	4	3	3	1	3	1	1	4	2	1	1	1	1	4	2	1	4
15	Diamond-Deluxe w/Grit-Safe	2	4	1	1	2	4	4	1	3	2	1	3	4	1	1	4	2	3	4	1	1	4
12	Dura-Step II	2	3	4	4	2	4	4	4	2	4	3	2	4	3	3	4	1	3	4	4	4	4
12	Ergo X-Treme with, w/o Grit	2	4	1	1	1	4	4	1	3	2	1	3	4	1	1	4	2	3	4	1	1	4
8	Industrial Deck Plate	1	4	1	3	2	4	3	4	1	3	2	1	4	2	2	1	1	1	4	2	1	4
22	Mat-A-Dor	2	3	4	4	2	4	4	4	2	4	3	3	4	3	2	4	2	3	4	4	4	4
7	Para-Mount	2	4	1	1	1	4	4	1	3	2	1	3	4	1	1	4	2	3	4	1	1	4
19	Pro-Tekt Runner	1	4	1	3	2	4	3	3	2	3	1	2	4	2	1	2	2	1	4	1	1	4
14	Safe-Flow Plus (NBR)	2	4	1	1	2	4	4	1	3	2	1	3	4	1	1	4	2	3	4	1	1	4
13	Safety-Step Perforated G/P	2	3	2	2	2	4	4	2	3	3	2	3	4	2	2	4	2	3	4	3	3	4
13	Safety-Step Perforated G/R	2	3	3	4	2	4	4	4	3	4	3	3	4	3	3	4	1	3	4	4	4	4
13	Safewalk G/P	2	4	2	3	2	4	4	2	2	3	2	3	4	2	2	4	1	3	4	4	4	4
13	Safewalk G/R	2	3	3	4	2	4	4	3	2	4	3	2	4	3	3	4	1	3	4	4	4	4
14	Safewalk-Light G/R	2	3	3	4	2	4	4	4	3	4	3	3	4	3	3	4	2	3	4	4	4	4
14	Safewalk-Light G/P	2	3	2	3	2	4	4	2	3	3	2	3	4	2	2	4	2	3	4	3	3	4
19	Sta-Kleen Runner	2	4	1	2	1	4	3	2	1	3	1	1	4	2	1	2	2	1	4	2	1	4
8	Spark-Safe	2	3	4	4	2	4	4	4	3	4	3	1	4	3	3	4	1	1	4	4	4	4
10	Tuff-Spun Foot-Lover	1	4	1	3	1	4	4	4	2	3	2	1	4	2	2	2	2	1	4	2	1	4
10	Wear-Bond Tuff-Spun	1	4	1	3	1	4	4	4	2	3	2	1	4	2	2	2	2	1	4	2	1	4
6	Wear-Bond Comfort-King	1	4	1	3	1	4	4	4	2	3	2	1	4	2	2	2	2	1	4	2	1	4
4	Workers-Delight Deck Plate	1	4	1	3	2	4	3	4	2	3	2	1	4	2	2	1	1	1	4	2	1	4
4	Workers-Delight Traction Plus	1	4	1	3	2	4	3	4	2	3	2	1	4	2	2	1	1	1	4	2	1	4
4	Workers-Delight Corrugated Rubber	2	3	4	4	2	4	4	4	3	4	3	1	4	3	3	4	1	1	4	4	4	4
4	Workers-Delight Spark-Safe	2	3	4	4	2	4	4	4	3	4	3	1	4	3	3	4	1	1	4	4	4	4
9	Yoga-Flex	2	3	4	4	2	4	4	4	2	4	3	2	4	3	3	4	1	3	4	4	4	4
	Olefin / polypropylene Surface	1	1	1	1	1	2	4	2	1	2	2	1	2	2	2	1	1	1	3	2	2	4
	Nylon Surface	4	1	1	1	1	1	4	2	2	1	1	4	1	1	1	4	1	4	1	1	1	1
	PET (polyester) Surface	3	2	1	1	2	1	4	2	2	1	1	4	1	1	1	3	1	3	1	1	1	1
	Rubber backing	2	4	4	2	2	4	4	2	2	4	2	2	4	2	2	4	1	3	4	2	2	4
	Vinyl backing	2	4	1	2	1	4	4	3	1	3	1	1	4	2	1	1	1	1	4	1	1	4

## KEY

- 1 Almost no dimension and/or hardness change
- 2 Minor change in dimension and/or hardness
- 3 Moderate change in dimension and/or hardness
- 4 Not Recommended

A/F Anti-Fatigue  
G/P Grease Proof  
G/R Grease Resistant





T **800.628.5463** F 800.544.2806

T **419.332.5531** F 419.332.4180

2100 Commerce Drive

Fremont, Ohio 43420

U.S.A.

[www.crownmats.com](http://www.crownmats.com)

PRODUCTS AND THEIR RELATED DETAILS ARE SUBJECT  
TO CHANGE. PLEASE CONTACT OUR CUSTOMER SERVICE  
DEPARTMENT TO OBTAIN CURRENT INFORMATION.