



# Commercial Matting Systems

3-Mat Systems

Outdoor Mats

Indoor Mats

Logo & Specialty Mats

Ergonomic Mats

PRODUCT  
CATALOG

[www.crownmats.com](http://www.crownmats.com)





Outdoor  
Mats  
Page 6

Indoor  
Mats  
Page 10

Ergonomic  
Mats  
Page 24

Logo /  
Specialty Mats  
Page 18

Slip-Resistant  
Mats  
Page 31

CROWN  
MATTING TECHNOLOGIES



**Crown Matting Technologies**, located in Fremont, Ohio, has been setting the pace in commercial matting, using proprietary innovative technologies to further our products and provide incomparable value to the industry for over 75 years.

From front door to back, and every step in between, Crown brings forward comprehensive matting solutions by offering the most diverse selection of matting in the industry, while continuing to lead in the area of custom cut matting solutions.

Crown Matting Technologies has been fortunate to serve a generation of business owners and public institutions, helping maintain and improve both the appearance and safety of buildings worldwide. We're honored to have done so. We look forward to continuing to bring forward innovative and comprehensive matting solutions for generations to come ... one mat at a time.



**Working hard for the hard working.**



Total Confidence Warranty means we stand behind this product for the life of the product. See our website for complete details.



Exclusive ThermoFlex Technology offers increased durability and allows for custom width of up to 11'9".



Look for LOGO icon throughout this catalog to know which matting products are a part of our custom logo program.



Our patented Zedlan Foam outwears and outperforms standard foam by nearly 3 to 1.



Exclusive technology that permanently bonds two surfaces without use of glues or adhesives.



Our Slip-Resistant icon indicates foam products coated with our unique slip-resistant formulation to provide additional safety benefits.



The D.I.N.P. Free icon indicates products that comply with the State of California's Proposition 65 regulations.



The ThermoGrip icon indicates products with our exclusive red backing which ends mat curling and also provides an anti-microbial solution.

## CONTENTS

**PRODUCT NAME** ..... **ITEM#** ..... **PAGE**

### 3-Mat System

Jasper.....	175	4
Oxford Elite.....	265	4
Oxford.....	360	4
Fore-Runner.....	155	5
Cross-Over.....	255	5
Walk-A-Way.....	355	5

### Outdoor Mats

Sani-Tred.....	667	7
Commercial Clean Machine.....	110	7
Diamond-DeluxeDuet.....	125/126	8
Mat-A-Dor.....	100	8
Spaghetti Mat.....	130/131	9
Crown-Tred.....	145	9

### Indoor Mats

Dura-Dot.....	202	11
Marathon.....	228	11
Tire-Track.....	225	12
EcoPlus.....	270/271	12
Grounds-Keeper.....	300	13
Dust-Star.....	350	13
Needle-Pin.....	240	14
Chevron.....	230	14
Terra-Nova.....	370	15
Wonder-Pro.....	310	15
Needle-Rib.....	235	16
Eco-Step.....	345	16
Rely-On Olefin.....	315	16
Super-Soaker.....	250/251	17
Super-Soaker Diamond.....	261/262	17
Triathlon.....	280	17

### Logo/Specialty Mats

Super Berber Inlay.....	065	19
Spaghetti Image Mat.....	075/076	19
Pro-Tekt Printed.....	070	19
Super-Soaker Inlay.....	025	19
Flocked Mat.....	010	20
Embossed Anti-Fatigue Mat.....	050	20
HD Jet-Print, Jet-Print.....	035/021	21
Crown-Tred Printed.....	040	21
Stat-Zap Carpet Top.....	900	22
Walk-N-Clean.....	995	22
Disinfectant Boot Bath.....	102	22
Chair Mats.....	990	22
<b>Accessories</b> .....		23
Rug-Hugger Backing.....		23
Mat-Lock Backing.....		23
Velcro Backing Strips.....		23
Nosing.....		23
Tack-Tape.....		23

### Ergonomic Mats

Workers-Delight Slate.....	546/556	25
Workers-Delight Spiffy Vinyl.....	531/541	25
Cushion Step Spiffy Vinyl.....	543/553	26
Workers-Delight Deck Plate.....	540/550	26
Wear-Bond Comfort-King.....	560/562	27
Alleviator Comfort-King.....	465	27
Comfort-King.....	440/445	28
Para-Mount.....	649	28
Safety-Step Solid-Top.....	685	29
Yoga-Flex.....	695	29
Wear-Bond Tuff-Spun.....	520/522	30
Tuff-Spun Foot-Lover.....	410/411/414	30
Safety-Step Perforated.....	680/681	31
Safewalk-Light.....	645/646	31
Diamond Deluxe w/Grit-Safe.....	133	31
<b>Runners</b> .....		32
Pro-Tekt.....	820	32
Deck Plate.....	850	32
Sta-Kleen.....	800	32
Corrugated Rubber.....	840	32
Gym-Dandy.....	871	32
<b>Care &amp; Maintenance, Warranty</b> .....		33



# 3-Mat System

## 1 Scraper

- Scrapes heavy debris
- Your first defense against mud, dirt, and snow
- Choose matting with a non-absorbent scraping surface, or open weave backing, to allow moisture to drain naturally

## 2 Scraper/Wiper

- Cleans & absorbs moisture
- The workhorse of the system
- Designed to remove and contain soil, waste particles and moisture at the entrance

## 3 Wiper

- Absorbs moisture & dries
- Removes remaining moisture, fine fragments and dust from footwear upon entrance to the interior of building





# THE REAL DIRT

Amount of dirt in a building that is tracked in on feet...



The estimated cost of removing a single pound of dirt from a modern building

**\$600**



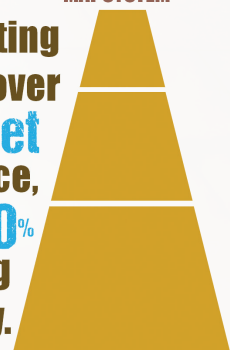
The amount of dirt 1,000 people can track into a building in just 20 days?



**\$1** spent keeping soil out of a building will save **\$10** in removing the soil once it's inside.

Entrance matting should cover **15 to 18 feet** of an entrance, preventing **80-90%** of dirt from coming into the facility.

**3**  
MAT SYSTEM





## #175 Jasper

SCRAPER | MEDIUM TRAFFIC



### FEATURES

- Cut pile mat made of strong nylon scraping fibers
- Slim profile facilitates the opening of doors
- For outdoor/indoor entrance and lobby with medium traffic
- ThermoFlex vinyl backing provides floor protection against the elements

### SPECIFICATIONS

**Standard Sizes:** 2' x 3'   3' x 4'   3' x 5'   3' x 6'   3' x 8'  
 3' x 10'   4' x 6'   4' x 8'   4' x 10'   6' x 10'

**Roll Sizes:** 3' x 60'   4' x 60'   6' x 60'

**Total Customization:** Up to 11'9" x 60'

**Finish:** ThermoFlex vinyl backing

**Thickness:** 7/16"

### WARRANTY

**Total Confidence**



Black



Gray

## #265 Oxford Elite

SCRAPER / WIPER | HEAVY TRAFFIC



### FEATURES

- Mix of abrasive and sturdy olefin fibers for well balanced scraping and wiping performance
- Heavyweight attractive surface hides dirt and keeps entrance clean
- ThermoGrip backing offers extreme durability and superior floor protection

### SPECIFICATIONS

**Standard Sizes:** 2' x 3'   3' x 4'   3' x 5'   3' x 6'   3' x 8'  
 3' x 10'   4' x 6'   4' x 8'   4' x 10'   6' x 10'

**Roll Sizes:** 3' x 60'   4' x 60'   6' x 60'

**Total Customization:** Up to 11'9" x 60'

**Finish:** ThermoGrip backing

**Thickness:** 7/16"

### WARRANTY

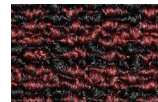
**Total Confidence**



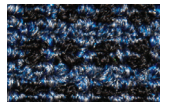
Black/Gray



Black/Brown



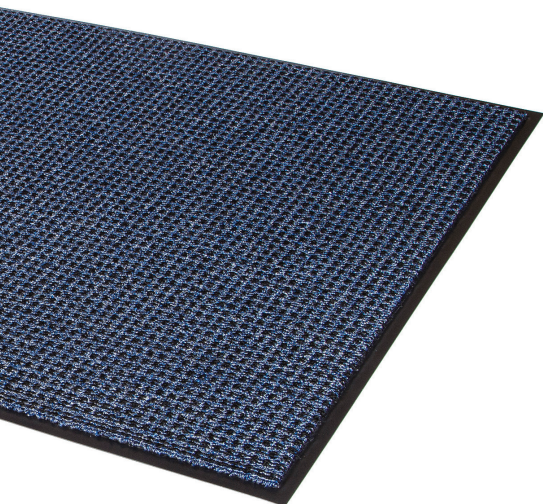
Black/Burgundy



Black/Blue

## #360 Oxford

WIPER | HEAVY TRAFFIC



### FEATURES

- Heavyweight loop pile mat that exceeds the performance of similar wipers in the market
- High performance mat that will retain water and minimize the risk of slips and falls
- Attractive pattern hides dirt and keeps your entrance clean
- ThermoGrip backing offers extreme durability and superior floor protection

### SPECIFICATIONS

**Standard Sizes:** 2' x 3'   3' x 4'   3' x 5'   3' x 6'   3' x 8'  
 3' x 10'   4' x 6'   4' x 8'   4' x 10'   6' x 10'

**Roll Sizes:** 3' x 60'   4' x 60'   6' x 60'

**Total Customization:** Up to 11'9" x 60'

**Finish:** ThermoGrip backing

**Thickness:** 7/16"

### WARRANTY

**Total Confidence**



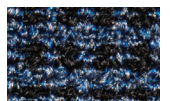
Black/Gray



Black/Brown



Black/Burgundy

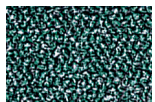


Black/Blue

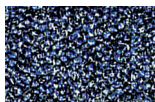


## #155 Fore-Runner

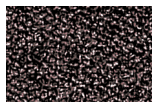
SCRAPER | MEDIUM TRAFFIC



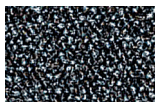
Green



Blue



Brown



Gray

### FEATURES

- Attractive two-tone colors and resilient construction resist fading
- Non-absorbent, abrasive surface scrapes soil and debris from footwear
- ThermoFlex vinyl backing provides floor protection against the elements

### SPECIFICATIONS

**Standard Sizes:** 2' x 3' 3' x 4' 3' x 5' 3' x 6' 3' x 8'  
3' x 10' 4' x 6' 4' x 8' 4' x 10' 6' x 10'

**Roll Sizes:** 3' x 60' 4' x 60' 6' x 60'

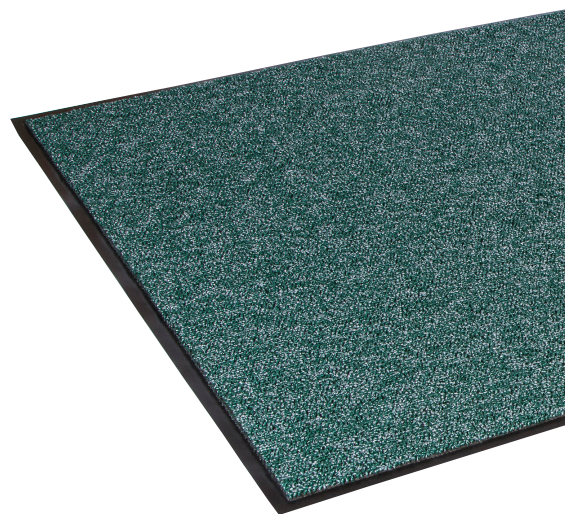
**Total Customization:** Up to 11'9" x 60'

**Finish:** ThermoFlex vinyl backing/borders

**Thickness:** 5/16"

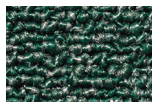
### WARRANTY

**Total Confidence**



## #255 Cross-Over

SCRAPER / WIPER | MEDIUM TRAFFIC



Green



Blue



Brown



Gray

### FEATURES

- Attractive two-tone colors and resilient construction resist fading and crushing
- Abrasive loop-pile surface scrapes debris and moisture from footwear while sturdy olefin fibers start the drying process
- ThermoFlex vinyl backing provides floor protection against the elements

**Standard Sizes:** 2' x 3' 3' x 4' 3' x 5' 3' x 6' 3' x 8'  
3' x 10' 4' x 6' 4' x 8' 4' x 10' 6' x 10'

**Roll Sizes:** 3' x 60' 4' x 60' 6' x 60'

**Total Customization:** Up to 11'9" x 60'

**Finish:** ThermoFlex vinyl backing/borders

**Thickness:** 5/16"

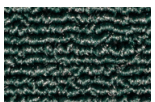
### WARRANTY

**Total Confidence**

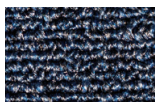


## #355 Walk-A-Way

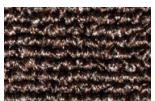
WIPER | MEDIUM TRAFFIC



Green



Blue



Brown



Gray

### FEATURES

- Attractive two-tone colors and resilient construction resist fading and crushing
- Dense, fast drying loop-pile fibers absorb heavy moisture and trap fine dirt particles
- ThermoFlex vinyl backing provides floor protection against the elements

### SPECIFICATIONS

**Standard Sizes:** 2' x 3' 3' x 4' 3' x 5' 3' x 6' 3' x 8'  
3' x 10' 4' x 6' 4' x 8' 4' x 10' 6' x 10'

**Roll Sizes:** 3' x 60' 4' x 60' 6' x 60'

**Total Customization:** Up to 11'9" x 60'

**Finish:** ThermoFlex vinyl backing/borders

**Thickness:** 5/16"

### WARRANTY

**Total Confidence**





# Outdoor Matting

Dirt that is brought in on shoes can cause premature and visible wear and tear on expensive interior flooring — both hard surfaced and carpeted floors.

In addition, a lack of correct entry matting affects indoor air quality. An outdoor mat is there to knock off the big stuff and begin the dirt management process.

What to look for:

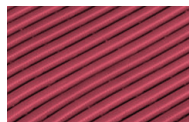
- Choose an aggressive mat with a surface designed and built for vigorous scraping.
- Quality outdoor mats can trap and hold as much as three pounds of dirt per square foot. Mats with this ability can actually reduce overall building cleaning costs
- Deep pile products hide dirt and prevent it from entering the building
- Consider choosing colors that efficiently conceal dirt, sand, salt, etc.



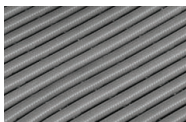


## #667 Sani-Tred

WET AREA | HEAVY TRAFFIC



Mulberry Red



Charcoal Gray



Ocean Blue



Top view. Slip-resistant, embossed surface



3/8" Thick

### FEATURES

- Open-grid construction made from non-porous extruded PVC
- Sanitized anti-bacterial and anti-fungal additives
- Use for health clubs, showers, spas, swimming pools, saunas and Jacuzzis or where barefoot traffic is extensive

### SPECIFICATIONS

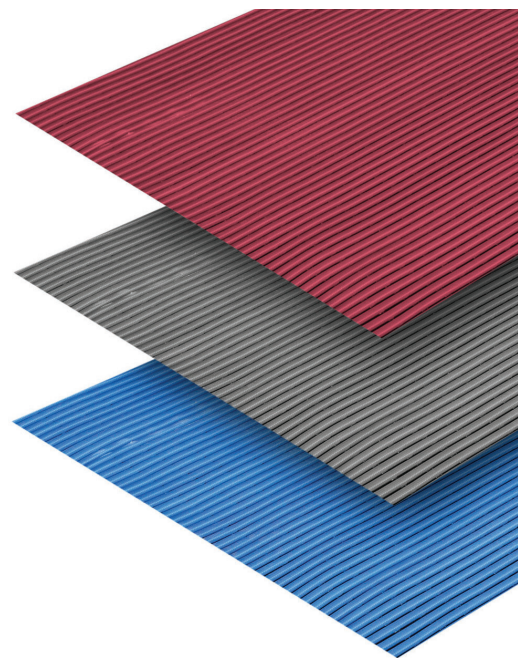
**Roll Sizes:** 2' x 40' 3' x 40' 4' x 40'

**Total Customization:** Unavailable

**Thickness:** 3/8"

### WARRANTY

**Total Confidence**



## #110 Commercial Clean Machine

SCRAPER | HEAVY TRAFFIC



Frosty Gray



Sandy Brown



All Purpose Charcoal



Black



5/8" Thick

### FEATURES

- Molded polyethylene blades resist crushing, mildew and fading
- Improved skid-resistant backing withstands low temperatures
- Deep pile hides dirt out of sight and prevents it from entering the building

### SPECIFICATIONS

**Standard Sizes:** 3' x 4' 3' x 5' 3' x 6'  
3' x 8' 4' x 6'\* 6' x 8'\*

**Roll Sizes:** 3' x 25'\*\* 3' x 50'\*\*

\*Products more than 3' wide have a seam in the middle.

\*\*Rolls do not have beveled nosing.

Heavy-duty beveled nosing recommended to prevent tripping.

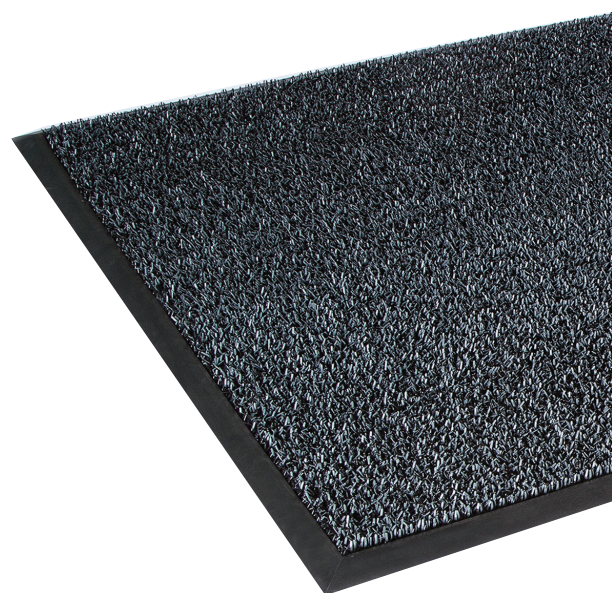
**Total Customization:** Length/width cuts up to 3' x 50' and up to 6' x 15'

**Finish:** Anti-skid polyethylene embossed film

**Thickness:** 5/8"

### WARRANTY

**Total Confidence**





## #125/126 Diamond-Deluxe Duet

SCRAPER | MEDIUM TRAFFIC



### FEATURES

- Beautiful two-tone vinyl loop mat provides a stylish, yet effective, scraper mat
- Distinctive embossed diamond pattern hides debris beneath the loops
- Also available without backing to facilitate the flow of water (ideal for locker rooms, pools, spas, etc.)

### SPECIFICATIONS

**Standard Sizes:** 3'x5' 4'x6'  
(edging/nosing available)

**Roll Sizes:** 3'x20' 4'x20' (No borders)

**Total Customization:** Up to 8' wide

#### Finish:

**#125:** with foam backing (1/2"), ideal for indoor usage

**#126:** unbacked drain-through (3/8")

### WARRANTY

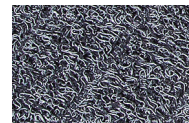
**Total Confidence**



Blue/Black



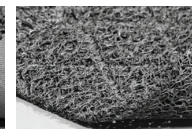
Brown/Caramel



Gray/Black



**#125:** with foam backing (1/2")



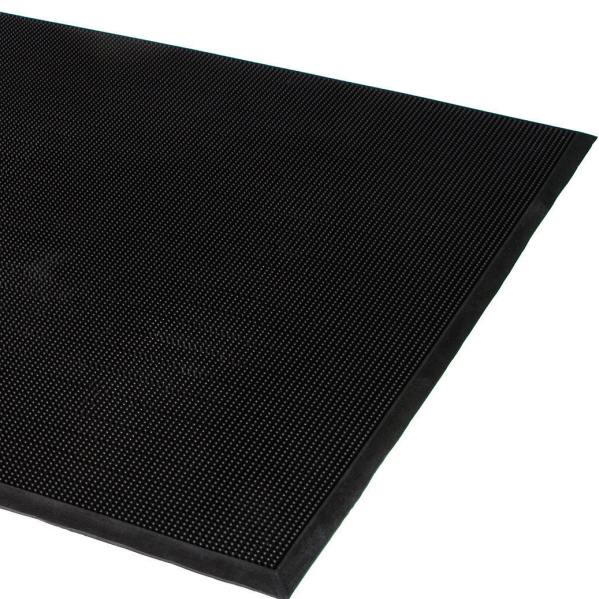
**#126:** unbacked with drain-through (3/8")



1/2" Thick

## #100 Mat-A-Dor

SCRAPER | MEDIUM TRAFFIC



### FEATURES

- Remains flexible and maintains performance in the coldest temperatures
- Contains 60% more "fingers" than standard fingertip mats, for outstanding scraping action
- Beveled edge reservoir retains up to 1 gallon of liquid per square yard

### SPECIFICATIONS

**Standard Sizes:** 24" x 32" 32" x 39"  
36" x 60" 36" x 72"

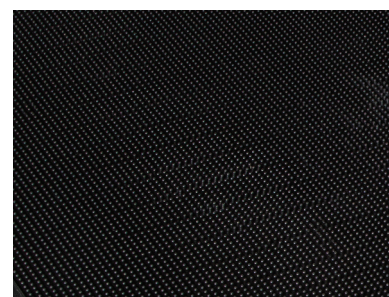
**Total Customization:** Unavailable

**Finish:** Rubber corrugated back and molded edging

**Thickness:** 5/8"

### WARRANTY

**Total Confidence**



Black  
Rubber mat with corrugated back and molded edging



5/8" Thick

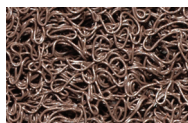


## #130/131 Spaghetti Mat

SCRAPER | LIGHT TRAFFIC



Gray



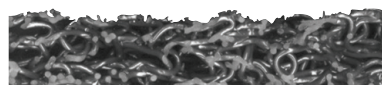
Brown



#130: with backing



#131: unbacked



3/8" Thick

### FEATURES

- PVC loop structure with vinyl backing
- Dries quickly, resists mildew and fading
- Also available without backing to facilitate the flow of water

### SPECIFICATIONS

**Standard Sizes:** 3' x 5' 4' x 6'  
(offered with or without crimped or applied vinyl nosing)

**Roll Sizes:** 3' x 20' 4' x 20' (No borders)

**Total Customization:** Up to 4' wide

#### Finish:

#130: with backing

#131: unbacked

**Thickness:** 3/8"

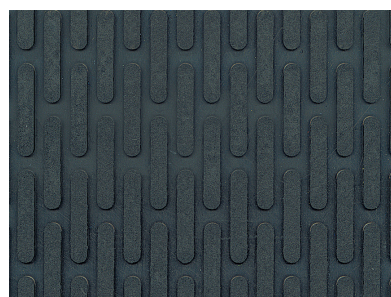
### WARRANTY

**Total Confidence**



## #145 Crown-Tred

SCRAPER | LIGHT TRAFFIC



Black

### FEATURES

- Rubber made to withstand any outside weather usage
- Affordable solution for small commercial location
- Raised pattern scrapes debris off of shoes

### SPECIFICATIONS

**Standard Sizes:** 3' x 5' 3' x 10' 4' x 6'

**Roll Sizes:** Unavailable

**Total Customization:** Unavailable

**Finish:** Beveled rubber borders

**Thickness:** 1/4"

### WARRANTY

**Total Confidence**





# Indoor Matting Solutions

Scraper/Wiper mats are often viewed as the best overall matting available. Ideally used to transition between rugged external matting and internal finishing mats, they scrape off light soils and absorb and retain water and moisture. Scraper/Wipers are often used for internal entryways – between external and internal doors, or as the first of two internal entry mats.

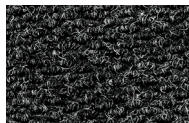
Wiper mats or “finishing” mats are best thought of as the final step in managing dirt and debris at the point of entry. The surface fibers pull off lingering dirt and dust, while absorbing and retaining water and wetness. Preventing the moisture from getting onto floors keeps them dry and safe. Wiper mats are also often used to support cleanliness throughout the building, such as outside of restrooms or kitchen and cafeteria entrances.





## #228 Marathon

SCRAPER / WIPER | HEAVY TRAFFIC



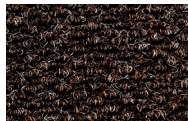
Anthracite



Beige



Blue/Gray



Dark Brown



1/2" Thick

### FEATURES

- Heavy-duty needlepunch surface for outstanding scraping and water retention
- Reinforced latex-coated pattern allows for increased dirt and moisture removal
- ThermoGrip backing offers extreme durability and superior floor protection

### SPECIFICATIONS

**Standard Sizes:** 2' x 3'    3' x 4'    3' x 5'  
                              3' x 6'    3' x 8'    3' x 10'  
                              4' x 6'    4' x 8'    4' x 10'  
    6' x 10'

**Roll Sizes:** 3' x 60'    4' x 60'    6' x 60'

**Total Customization:** Available in 3', 4', 6' widths

**Finish:** ThermoGrip backing

**Thickness:** 1/2"

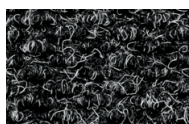
### WARRANTY

**Total Confidence**



## #202 Dura-Dot

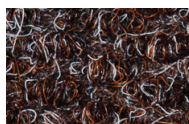
SCRAPER / WIPER | HEAVY TRAFFIC



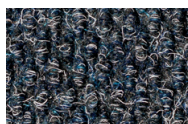
Anthracite



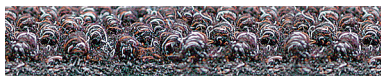
Blue/Gray



Dark Brown



Navy Blue



3/8" Thick

### FEATURES

- Stain UV and abrasion resistant berber surface for high-performance applications
- Anti-skid and moisture resistant gel foam backing
- Can also be used outdoors, under cover (not recommended for applications where storage, rolling and unrolling is required)

### SPECIFICATIONS

**Standard Sizes:** 3'3" x 5'3"    3'3" x 10'3"  
                              4'3" x 6'3"

*(Mats have sewn and glued picture frame nosing)*

**Roll Sizes:** 3' x 82'    4' x 82'    6' x 82'  
                              3'3" x 82'    6'7" x 82'    9'10" x 82'  
    13'1" x 82'

*(rolls do not have beveled borders)*

**Total Customization:** Up to 13'1" x 82'

**Thickness:** 3/8"

### WARRANTY

**Total Confidence**





## #225 Tire-Track

SCRAPER / WIPER | HEAVY TRAFFIC



### FEATURES

- Industrial strength carpet can hold up to 2 gallons of liquid per square yard
- Unique pattern offers effective scraping action and long lasting appearance
- ThermoGrip backing offers extreme durability and superior floor protection

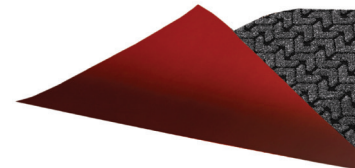
### SPECIFICATIONS

**Standard Sizes:** 6'x 6' 6'x 8'**Finish:** ThermoGrip backing**Thickness:** 3/8"

### WARRANTY

**Total Confidence**

Bi-Level Polypropylene needlepunch pattern.



ThermoGrip backing offers superior floor protection.

## #270/271 EcoPlus

SCRAPER / WIPER | HEAVY TRAFFIC



### FEATURES

- Elevated construction will scrape shoes and hold dirt beneath shoe level, while absorbing up to one gallon of moisture
- Soft 100% recycled polyester fiber top surface allows for better wiping action
- Rubber blend backing with 20% post-consumer recycled tires

### SPECIFICATIONS

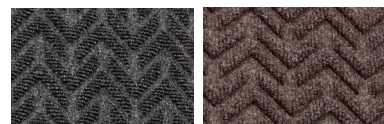
**Standard Sizes:** 2' x 3'    3' x 4'    3' x 5'  
 3' x 8'    3' x 10'    4' x 6'  
 4' x 8'    4' x 10'    6' x 8'

**Finish:** #270 Rubber borders

#271 Fabric covered borders

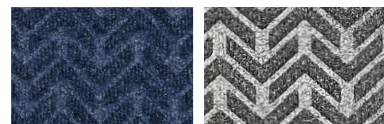
**Thickness:** 3/8"

### WARRANTY

**Total Confidence**

Charcoal

Walnut



Midnight Blue

Granite



3/8" Thick



## #300 Grounds-Keeper

WIPER | HEAVY TRAFFIC



Black



Castellan Red



Charcoal



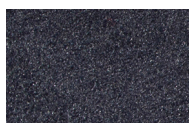
Evergreen



Marlin Blue



Walnut



Navy Blue



Pebble Brown



1/2" Thick

### FEATURES

- Retains 60% more liquid and fine dirt than our popular Rely-On Olefin
- Dries three times faster than nylon or polyester rental mats
- ThermoFlex vinyl backing provides floor protection against the elements

### SPECIFICATIONS

**Standard Sizes:** 2' x 3'    3' x 4'    3' x 5'  
 3' x 6'    3' x 8'    3' x 10'  
 4' x 6'    4' x 8'    4' x 10'  
 6' x 10'

**Roll Sizes:** 3' x 60'    4' x 60'    6' x 60'

**Total Customization:** Up to 11'9" x 60'

**Finish:** ThermoFlex vinyl backing/borders

**Thickness:** 1/2"

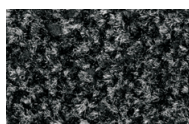
### WARRANTY

**Total Confidence**

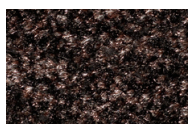


## #350 Dust-Star

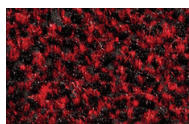
WIPER | HEAVY TRAFFIC



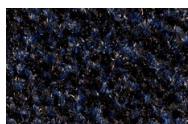
Charcoal



Walnut



Red



Marlin Blue



Two-tone color mat for a better camouflage of particles.

1/2" Thick

### FEATURES

- Unique microfiber with incredible dust and moisture retention properties
- Positively charged microfibers will attract hair, lint, dust and keep them from polluting the air
- Holds close to three times more liquid than standard wiper mats
- ThermoGrip backing offers extreme durability and superior floor protection

### SPECIFICATIONS

**Standard Sizes:** 2' x 3'    3' x 4'    3' x 5'  
 3' x 6'    3' x 8'    3' x 10'  
 4' x 6'    4' x 8'    4' x 10'  
 6' x 10'

**Roll Sizes:** 3' x 60'    4' x 60'    6' x 60'

**Total Customization:** 3', 4', 6' widths

**Finish:** ThermoGrip backing

**Thickness:** 1/2"

### WARRANTY

**Total Confidence**





## #240 Needle-Pin

SCRAPER / WIPER | MEDIUM TRAFFIC



### FEATURES

- Raised berber-style surface that scrapes dirt and removes moisture efficiently
- Crush resistant surface reduces appearance of foot traffic
- ThermoFlex vinyl backing provides floor protection against the elements

### SPECIFICATIONS

**Standard Sizes:** 2' x 3' 3' x 4' 3' x 5' 3' x 6'  
 3' x 8' 3' x 10' 4' x 6' 4' x 8'  
 4' x 10' 6' x 10'

**Roll Sizes:** 3' x 60' 4' x 60' 6' x 60'

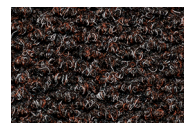
**Total Customization:** Up to 11'9" x 60'

**Finish:** ThermoFlex vinyl backing/borders

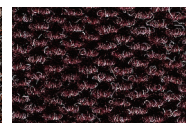
**Thickness:** 7/16"

### WARRANTY

**Total Confidence**



Walnut



Burgundy



Charcoal



Pebble Brown

## #230 Chevron

SCRAPER / WIPER | MEDIUM TRAFFIC



### FEATURES

- Vivid, nonfading colors that resist fading
- ThermoFlex vinyl backing offers superior floor protection
- Surface made from 50% P.E.T. recycled fibers
- ThermoFlex vinyl backing provides floor protection against the elements

### SPECIFICATIONS

**Standard Sizes:** 2' x 3' 3' x 4' 3' x 5' 3' x 6'  
 3' x 8' 3' x 10' 4' x 6' 4' x 8'  
 4' x 10' 6' x 10'

**Roll Sizes:** 3' x 60' 4' x 60' 6' x 60'

**Total Customization:** Up to 11'9" x 60'

**Finish:** ThermoFlex vinyl backing/borders

**Thickness:** 5/16"

### WARRANTY

**Total Confidence**



Brown



Burgundy



Charcoal



Forest Green

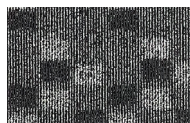


Steel Blue

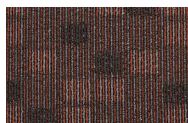


## #370 Terra-Nova

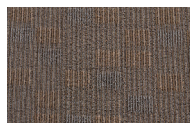
WIPER | LIGHT TRAFFIC



Tuxedo



Amber



Stone

### FEATURES

- Tight loop-pile surface offers excellent water retention and crush resistant
- Molded plastic blades resist crushing, mildew and fading
- ThermoFlex vinyl backing provides floor protection against the elements

### SPECIFICATIONS

**Standard Sizes:** 3' x 4'    3' x 5'    3' x 8'  
                          3' x 10'    4' x 6'    4' x 8'  
                          4' x 10'    6' x 10'

**Roll Sizes:** 3' x 60'    4' x 60'    6' x 60'

**Total Customization:** 3', 4', 6' widths

**Finish:** ThermoFlex vinyl backing/borders

**Thickness:** 5/16"

### WARRANTY

**Total Confidence**



## #310 Wonder-Pro

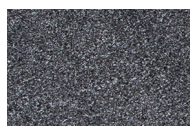
WIPER | MEDIUM TRAFFIC



Black



Castellan Red



Charcoal



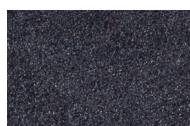
Evergreen



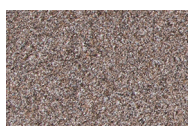
Marlin Blue



Walnut



Navy Blue



Pebble Brown

### FEATURES

- Retains 60% more liquid and fine dirt than our popular Rely-On Olefin
- Wide selection of colors are resistant to fading
- ThermoFlex vinyl backing provides floor protection against the elements

### SPECIFICATIONS

**Standard Sizes:** 2' x 3'    3' x 4'    3' x 5'  
                          3' x 6'    3' x 8'    3' x 10'  
                          4' x 6'    4' x 8'    4' x 10'

6' x 10'

**Roll Sizes:** 3' x 60'    4' x 60'    6' x 60'

**Total Customization:** Up to 11'9" x 60'

**Finish:** ThermoFlex vinyl backing/borders

**Thickness:** 7/16"

### WARRANTY

**Total Confidence**





## #235 Needle-Rib

SCRAPER / WIPER | LIGHT TRAFFIC



### FEATURES

- Unilateral ribbed pattern on vinyl backing that traps moisture and protects floors
- Quick drying and fade resistant
- Surface made from 50% P.E.T. recycled fiber
- ThermoFlex vinyl backing provides floor protection against the elements

### SPECIFICATIONS

**Standard Sizes:** 2' x 3' 3' x 4' 3' x 5' 3' x 6' 3' x 8'  
3' x 10' 4' x 6' 4' x 8' 4' x 10' 6' x 10'

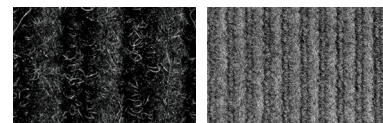
**Roll Sizes:** 3' x 60' 4' x 60' 6' x 60'

**Total Customization:** 3', 4', 6' widths

**Finish:** Vinyl backing and borders

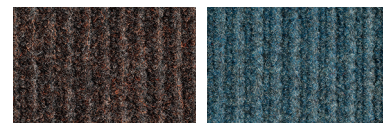
**Thickness:** 5/16"

**WARRANTY** Total Confidence



Charcoal

Gray



Brown

Blue

## #345 Eco-Step

WIPER | LIGHT TRAFFIC



### FEATURES

- Retains 20% more liquid and fine dirt than most standard olefin mats
- ThermoFlex vinyl backing provides floor protection against the elements
- New green generation wiper mat made of 100% P.E.T. fiber recycled surface!

### SPECIFICATIONS

**Standard Sizes:** 2' x 3' 3' x 4' 3' x 5' 3' x 6' 3' x 8'  
3' x 10' 4' x 6' 4' x 8' 4' x 10' 6' x 10'

**Roll Sizes:** 3' x 60' 4' x 60' 6' x 60'

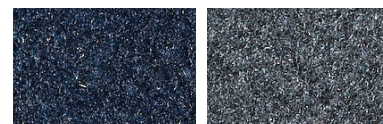
**Total Customization:** Up to 11'9" x 60'

**Finish:** ThermoFlex vinyl backing/borders

**Thickness:** 1/4"

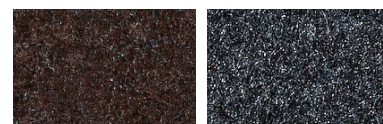
**WARRANTY**

Total Confidence



Midnight Blue

Granite



Walnut

Charcoal

## #315 Rely-On Olefin

WIPER | LIGHT TRAFFIC



### FEATURES

- Economical olefin wiper mat available in a wide array of colors to match most décors
- Small profile fits under most doors
- ThermoFlex vinyl backing provides floor protection against the elements

### SPECIFICATIONS

**Standard Sizes:** 2' x 3' 3' x 4' 3' x 5' 3' x 6' 3' x 8'  
3' x 10' 4' x 6' 4' x 8' 4' x 10' 6' x 10'

**Roll Sizes:** 3' x 60' 4' x 60' 6' x 60'

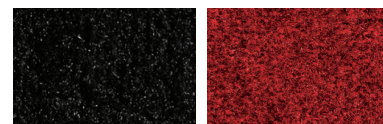
**Total Customization:** Up to 6' x 60'

**Finish:** Vinyl backing and borders

**Thickness:** 7/16"

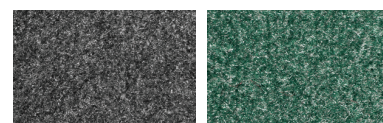
**WARRANTY**

Total Confidence



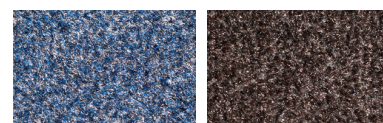
Black

Castellian Red



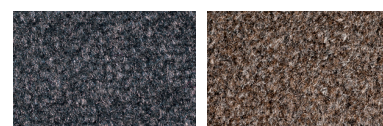
Charcoal

Evergreen



Marlin Blue

Walnut



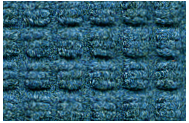
Navy Blue

Pebble Brown

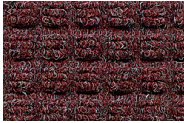


## #250 Super-Soaker

SCRAPER / WIPER | MEDIUM TRAFFIC



Blue



Burgundy



Forest Green



Charcoal



Dark Brown

### FEATURES

- Non-skid nib backing will effectively grip mat to the floor
- Crush-proof waffle pattern will scrape shoes and hold dirt beneath shoe level, while wiping moisture
- 100% solution-dyed polypropylene surface won't fade or rot

### SPECIFICATIONS

**Standard Sizes:** 2' x 3'   3' x 4'   3' x 5'   3' x 10'  
4' x 6'   4' x 8'   4' x 10'   6' x 10'

**Total Customization:** Unavailable

**Finish:** #250 Rubber borders

**Thickness:** 3/8"

### WARRANTY

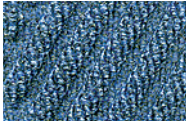
**Total Confidence**



3/8" Thick

## #261/262 Super-Soaker Diamond

SCRAPER / WIPER | MEDIUM TRAFFIC



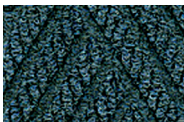
Blue



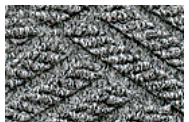
Charcoal



Dark Brown



Navy Blue



Slate



Burgundy

### FEATURES

- Make your choice from a variety of stock sizes and 5 rich-looking colors to give the final touch to your décor
- Molded rubber backing for increased durability, flexibility and easy maintenance
- Backing contains 20% recycled material

### SPECIFICATIONS

**Standard Sizes:** 2' x 3'   3' x 4'   3' x 5'   3' x 10'  
4' x 6'   4' x 8'   4' x 10'   6' x 8'

**Total Customization:** Unavailable

**Finish:** #261 Rubber borders; #262 Fabric borders

**Thickness:** 3/8"

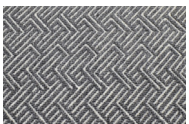
### WARRANTY

**Total Confidence**



## #280 Triathlon

SCRAPER / WIPER | HEAVY TRAFFIC



Cool Gray



Charcoal



Walnut

### FEATURES

- Elegant 2 tone, bi-level pattern for indoor entrances and lobbies with heavy traffic
- Low-melt treatment that keeps surface strong and coarse for many years to come
- ThermoGrip backing offers extreme durability and superior floor protection

### SPECIFICATIONS

**Standard Sizes:** 2' x 3'   3' x 4'   3' x 5'   3' x 6'   3' x 8'  
3' x 10'   4' x 6'   4' x 8'   4' x 10'   6' x 10'

**Roll Sizes:** 3' x 60'   4' x 60'   6' x 60'

**Total Customization:** 3', 4', 6' widths

**Finish:** ThermoGrip Backing

**Thickness:** 7/16"

### WARRANTY

**Total Confidence**





# Logo/Specialty Mats & Accessories

Adding a logo to commercial matting can be an effective tool for enhancing the appearance and professionalism of any business or institutional environment. Logo mats can be used as highly visible entrance mats, a centerpiece for a lobby or reception areas, or a way to build an organization's image wherever internal matting is utilized.

Crown Matting Technologies provides a number of options for customers looking to add a logo to their overall matting programs. From flocked mats and Graphic Inlays to HD Jet-Print and Crown-Tred Printed Mats, Crown can best match your need with the most appropriate matting application.

In addition to logo mats, Crown offers an extensive line of specialty mats and accessories to meet even the most complex or unique matting challenges.





## Logo Mats

Greet your audience, inspire confidence, stand out with custom image matting. Personalize your entrance with a promotional logo mat, that not only welcomes your audience, but enhances brand recognition over time.

Contact our customer service department for further information.

### #065 Super Berber Inlay

SCRAPER / WIPER | HEAVY TRAFFIC

#### FEATURES

- 100% Solution Dyed Polypropylene Berber, UV, and abrasion-resistant
- Maximum Durability All-weather rubber backing

#### SPECIFICATIONS

**Standard Sizes:** 2'x3' 3'x4' 3'x5' 3'x6' 3'x8' 3'x10' 3'x12' 4'x6' 4'x8' 4'x10' 4'x12' 4'x14'

**Roll Sizes:** 4'x16' 4'x18' 4'x20' 6'x5' 6'x6' 6'x8' 6'x10' 6'x12' 6'x20'

**Total Customization:** from 2'x1' up to 13'2"x100

**Colors:** Up to 40 Available Colors. No PMS Color Match available.

**Lead Time:** 2-3 weeks after signed proof

Contact Customer Service

#### WARRANTY

Total Confidence



### #075#076 Spaghetti Image Mat

SCRAPER | LIGHT TRAFFIC

#### FEATURES

- PVC loop structure with vinyl backing
- Dries quickly and resists mildew and fading
- Available without backing to facilitate the flow of water
- Easy to clean

#### SPECIFICATIONS

**Standard Sizes:** 2'x3', 3'x4', 3'x5', 3'x10', 4'x6' 4'x8', 4'x10', 4'x12', 4'x16', 4'x20'

**Roll Sizes:** Unavailable

**Total Customization:** 4'widths; up to 8'widths w/ one seam

**Lead times:** 2-3 weeks after signed proof

**Colors:** Choose from 20 vibrant colors for your design or logo.

Contact Customer Service

#### WARRANTY

Total Confidence



### #070 Pro-Tekt Printed

LIGHT TRAFFIC

#### FEATURES

- Digitally printed on our pebbled surface Pro-Tekt Mat
- Slip Resistant
- Easy to clean
- Lightweight and flexible with a low profile

#### SPECIFICATIONS

**Standard Sizes:** 2'x3'

**Roll Sizes:** Unavailable

No minimum quantity, no set up charge

**Finish:** Vinyl foam with pebble surface

**Design Colors:** Unlimited

**Mat Color:** Black

Color matching available

**Lead Time:** 2-3 weeks after signed proof

Contact Customer Service

#### WARRANTY

Total Confidence



### #025 Super-Soaker Inlay

SCRAPER / WIPER | MEDIUM TRAFFIC

#### FEATURES

- Super-Soaker Inlay is a precision cut of your logo molded to a rubber cleated backing
- Molded nitrile rubber backing helps to reduce mat movement
- Great for indoor and covered outdoor placement
- No minimum quantity, no set up charge

#### SPECIFICATIONS

**Standard Sizes:** 2'x3' 3'x4' 3'x5' 3'x10' 3'x12' 3'x15' 3'x20' 4'x6' 4'x8' 4'x10' 4'x12' 4'x14' 4'x16' 4'x20' 6'x5' 6'x6' 6'x8' 6'x10' 6'x12' 6'x14' 6'x16' 6'x18' 6'x20'

**Roll Sizes:** Unavailable

**Lead Time:** 2-3 weeks after signed proof

**Custom Sizes:** Unavailable

**Finish:** Rubber edging Fabric Edging Rubber cleated backing

**Colors: Base colors:** Med. Brown, Dark Brown, Med Gray, Charcoal, Evergreen, Navy, Med Blue, Bluestone, Red/Black

**Logo Colors:** White, Yellow, Gold, Purple, Orange, Solid Red, Light Green, Aquamarine

#### WARRANTY

Total Confidence





## Flocked Mats

Used for moderate to low traffic areas for indoor use only. A logo is produced on our Olefin Mat using electrical statically charged nylons fibers creating a strong visual of your image and message. The imprint will be slightly raised and able to apply up to 4 colors.

### #010 Flocked Mat

WIPER | LIGHT TRAFFIC

#### FEATURES

- 100% olefin mat with vinyl backing absorbs moisture, traps fine dust and protects floors
- Flocked process; nylon fibers electrostatically charged and applied to the carpet surface with adhesive
- Available on different carpet quality (Rely-On light usage, Eco-Step 100% recycled surface - medium usage)
- More than 20 PMS contrasting flocking colors available - should state "SPECIAL COLORS ON REQUEST – SURCHARGE APPLIES, CONTACT CUSTOMER SERVICE"

#### SPECIFICATIONS

**Standard Sizes:** 2' x 3'    3' x 4'    3' x 5'  
3' x 6'    4' x 6'

**Roll Sizes:** Unavailable

**Total Customization:** Available; contact customer service

**Finish:** Contrasting flocking colors

**Lead Time:** 2-3 weeks after signed proof

#### Colors: Mat Colors:

Black, Burgundy, Castellan Red, Charcoal, Evergreen, Marlin Blue, Mid-Gray, Navy Blue, Pebble Brown, Walnut, Solid Red, Solid Blue, Walnut\*, Charcoal\*, Granite\*, Midnight Blue\*

*\*Eco-Step Only*

#### Flock Colors:

PMS 199C, PMS 3435C, PMS 129C, PMS 209C, PMS MAGENTA, PMS 166C, PMS 466C, PMS 320U, WHITE, PMS 287C, PMS 267C, PMS 2945, PMS 4625, PROCESS YELLOW C, PMS 138C, BLUE U, PMS 424U, PMS 421U, PMS 282C, BLACK

#### WARRANTY

Total Confidence



### #050 Embossed Anti-Fatigue Mat

ERGONOMIC | DRY AREAS

#### FEATURES

- Stimulates blood circulation and reduces muscular pain caused by standing for long periods of time
- High-quality embossed image technology for maximum durability
- Set-up fee required/Choose up to 3 logo colors. Min. order 50 mats
- Also available with anti-microbial additive, Min. order 300 Mats. Contact customer service

#### SPECIFICATIONS

**Standard Sizes:** 2' x 3'    3' x 4'    3' x 5'    3' x 10'

**Roll sizes:** Unavailable

**Total Customization:** Available; call customer service

#### Finish:

**Style 1** – Embossed no color

**Style 2** – Embossed with vinyl

**Style 4** – Digital file print contact customer service

#### Colors:

**3/8" Tuff Spun** – Black, Gray

**3/8" Comfort King** – Black, Royal Blue, Steel Gray

**Lead Time:** 2-3 weeks after signed proof

#### WARRANTY

Total Confidence





## HD Jet Print

Used in heavy traffic areas for indoor use only. This High Definition Digital Ink Printed nylon mat allows excellent color tones and shading capabilities that capture a photo quality look. The backing is a premium 70 mil vinyl. Over 600 colors available.

### #035 HD Jet-Print

WIPER | HEAVY TRAFFIC

#### FEATURES

- Unlimited color combinations available to create your personalized message or logo. PMS color match available (surcharge)
- High-Definition logo printed nylon mat offers up to 10 times the definition of a regular printed mat. Retains 50% more liquid and fine dirt than our standard Jet-Print
- No minimum quantity, no set-up charge

#### SPECIFICATIONS

**Standard Sizes:** 2' x 3' 3' x 4' 3' x 5' 3' x 10' 4' x 6'  
4' x 8' 5' x 8' 5' x 10' 6' x 10' 6' x 12'

**Roll Sizes:** Unavailable

**Total Customization:** Length/Width cuts up to 6'x40'

**Finish:** Vinyl backing and borders, Excellent digital reproduction

**Lead Time:** 2-3 weeks after signed proof

**Colors:** Up to 150 available colors

#### WARRANTY

Total Confidence



### #030 Jet-Print

WIPER | HEAVY TRAFFIC

#### FEATURES

- Unlimited color combinations available to create your personalized message or logo. PMS color match available (surcharge)
- Printed nylon surface
- No minimum quantity, no set-up charge

#### SPECIFICATIONS

**Standard Sizes:** 2' x 3' 3' x 4' 3' x 5' 3' x 10' 4' x 6'  
4' x 8' 5' x 8' 5' x 10' 6' x 10' 6' x 12'

**Roll Sizes:** Unavailable

**Total Customization:** Length/Width cuts up to 6'x40'

**Finish:** Rubber cleated backing, Digital reproduction

**Colors:** Black, Burgundy, Moss Green, Forest Green, Emerald Green, Dark Gold, Chocolate, Light Blue, Gold, Dark Gray, White Silver, Suede, Navy, Orange, Pearl White, Red, Royal Blue, Silver, Sandalwood, Yellow, Hot Pink - Up to 300 available colors

#### WARRANTY

Total Confidence



## Crown-Tred Printed Mats

Used in heavy traffic areas for outdoor/indoor use. The nitrile rubber scraper will withstand all weather elements and is UV protected. The image is digitally printed on a thermoplastic material and molded onto the mat which allows excellent color tones and color variations. The permanent bond process allows for a long lasting impression.

### #040 Crown-Tred Printed

SCRAPER | MEDIUM TRAFFIC

#### FEATURES

- First line of defense: designed for outdoors (UV resistant) and between entrance door applications
- Excellent color tones and shades with unparalleled detail and clarity
- Durable ¼" nitrile rubber construction. Oil, grease and chemical resistant
- No minimum quantity, no set up charge, PMS color match available (surcharge)

#### SPECIFICATIONS

**Standard Sizes:** 2' 6" x 3' 3' x 5' 3' x 10' 4' x 6'  
4' x 8' 6' x 6' 6' x 8'

**Roll Sizes:** Unavailable

**Total Customization:** Unavailable

**Finish:** Nitrile Rubber blend

**Lead Time:** 2-3 weeks after signed proof

**Colors:** Black

#### WARRANTY

Total Confidence





## #900 Stat-Zap Carpet Top

SPECIALTY



### FEATURES

- Attractive conductive loop carpet with a resistivity of  $10^{10}$  ohms per square
- Anti-slip Rug-Hugger backing to reduce mat movement on carpeting
- Stock mats include ground cord, which can be connected to an electrical outlet

### SPECIFICATIONS

**Standard Sizes:** 2' x 3' 3' x 4' 3' x 5' 3' x 10' 4' x 6' 4' x 8' 4' x 10'

**Roll Sizes:** 3' x 60' 4' x 60'

**Total Customization:** Custom cuts need one grounding cord per 10' (sold separately)

**Finish:** Vinyl backing and borders with anti-slip Rug-Hugger

**WARRANTY** Total Confidence



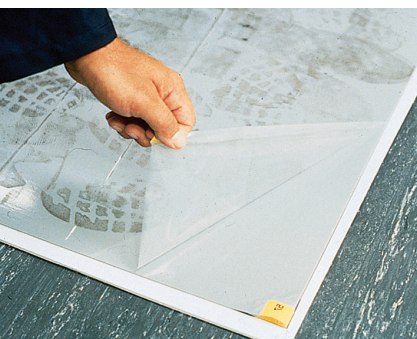
Pewter



Ground cord

## #995 Walk-N-Clean

SPECIALTY



### FEATURES

- 60 shoe-cleaning tacky sheets treated with an anti-microbial agent protects against growth of bacteria, mold and mildew
- Nontoxic, refillable frame with a slip resistant backing
- When top layer is dirty, simply peel and discard

### SPECIFICATIONS

**Standard Sizes:** Single Tray: 31 1/2" x 25 1/2" Double Tray: 31 1/2" x 51"  
Refill 30" x 24" (case of 4 replacement pads)

**Finish:** Nonskid polyethylene backing

**WARRANTY** Total Confidence



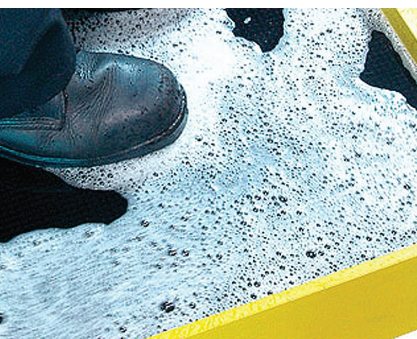
White



Gray

## #102 Disinfectant Boot Bath

SPECIALTY



### FEATURES

- 2" raised wall to hold any USDA accepted disinfectant sanitizer or liquid for hygienic cleaning
- Aggressive rubber fingertips scrape bottom of boots reducing the risk of cross contamination
- Yellow raised borders for high visibility and increased safety

### SPECIFICATIONS

**Standard Sizes:** 32" x 39"

**Total Customization:** Unavailable

**WARRANTY** Total Confidence

Black with  
Yellow Borders

## #990 Chair Mats

SPECIALTY



### FEATURES

- Commercial-quality chair mats for offices allow desk chairs to move effortlessly
- Available in different models for all types of carpet and flooring and anti-static ( $10^{11}$  ohms per square) option

### SPECIFICATIONS

**Standard Sizes:** 45" x 53" with 12"x25" lip 46" x 60" with 12"x25" lip

**Custom Sizes:** Contact customer service

**WARRANTY** Total Confidence





## Rug-Hugger Backing

### ACCESSORY

#### FEATURES / SPECIFICATIONS

- Anti-slip backing to reduce mat movement on carpets
- Can be factory applied to most vinyl backed products



## Mat-Lock Backing

### ACCESSORY

#### FEATURES / SPECIFICATIONS

- Slip-resistant backing to secure mat to hard surfaces such as wood, ceramic tile, marble, linoleum, etc.
- Can be factory applied to most vinyl backed products

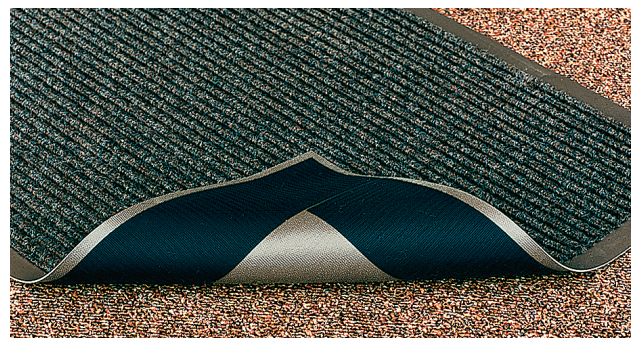


## Velcro Backing Strips

### ACCESSORY

#### FEATURES / SPECIFICATIONS

- Self-applied adhesive Velcro strips to secure mat to loop-pile carpeting
- Can be easily applied to most vinyl backed products
- Available in 4" wide strips cut to length or by the 75' roll

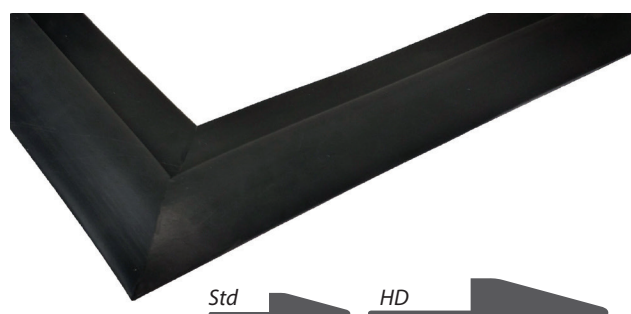


## Nosing

### ACCESSORY

#### FEATURES / SPECIFICATIONS

- Loose edging to be applied to ends of your mat
- Available in standard rolls of ¾" x 100' or heavy-duty rolls of 1 ½" x 50'

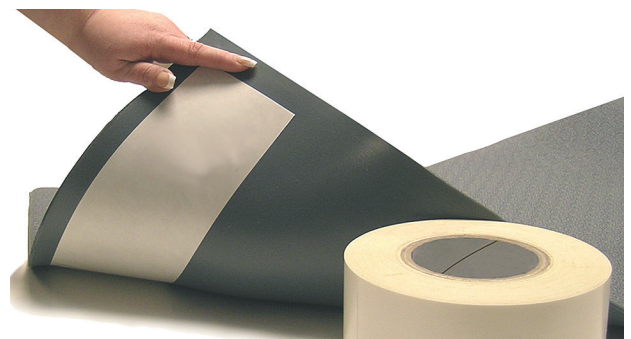


## Tack-Tape

### ACCESSORY

#### FEATURES / SPECIFICATIONS

- Specially designed double-sided tape for securing foam products and vinyl backed carpet mats to floors
- Roll dimensions, 4" x 250'





# Ergonomic Mats

Ergonomic mats help ease leg, foot, and lower back fatigue and pain and can also assist in the areas of slip resistance, wet-area drainage, and worker safety.

## **Strong. Resilient. Safe.**

Three critical matting features that can dramatically influence the success of your workforce and your business. Zedlan Foam was developed with these workplace imperatives in mind.

- Strong - Zedlan Foam outwears similar products by nearly 3-to-1
- Resilient - Zedlan Foam has three times the resilience of traditional ergonomic products
- Safe - combined with our exclusive slip resistant technology, Zedlan Foam offers superior traction compared to standard foam products

Zedlan Foam. Just one more way we support our customers by developing industry leading products that support their workforce

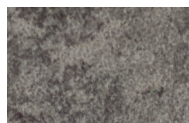
Comfort-King p. 28



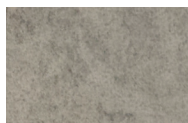


## #546/556 Workers-Delight Slate

DRY AREA



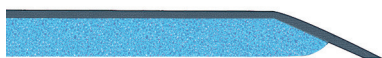
Dark Gray



Light Gray



Brown



Zedlan foam

### FEATURES

- Our new modern design combined with our patented Zedlan Foam creates the ultimate combination of form and function
- UV-Cured PVC top surface facilitates ease of maintenance
- New slip-resistant coating on underside of mat ensures steadiness and control on smooth surfaces
- Use for cashier stations, pharmacies, medical/dental offices, laboratories, pick modules, warehousing

### SPECIFICATIONS

**Standard Sizes:** 2' x 3' 3' x 5' 3' x 12'

**Roll Sizes:** 2' x 60' 3' x 60' 4' x 60'

**Thickness:** #546 – Standard – 5/8"

#556 – Ultra – 7/8" provides 50% more comfort

### WARRANTY

Total Confidence

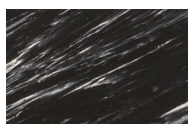


## #531/#541 Workers-Delight Spiffy Vinyl

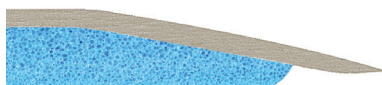
DRY AREA



French Gray



Black



Zedlan foam

### FEATURES

- Puncture-resistant PVC top surface allows for better durability and stability
- Patented Zedlan foam combined with our fusion technology creates an unmatched level of durability and comfort
- New slip-resistant coating on underside of mat ensures steadiness and control on smooth surfaces
- Use for cashier stations, pharmacies, medical/dental offices, laboratories, pick modules, warehousing

### SPECIFICATIONS

**Standard Sizes:** 2' x 3' 3' x 5' 3' x 12'

**Roll Sizes:** 2' x 60' 3' x 60' 4' x 60'

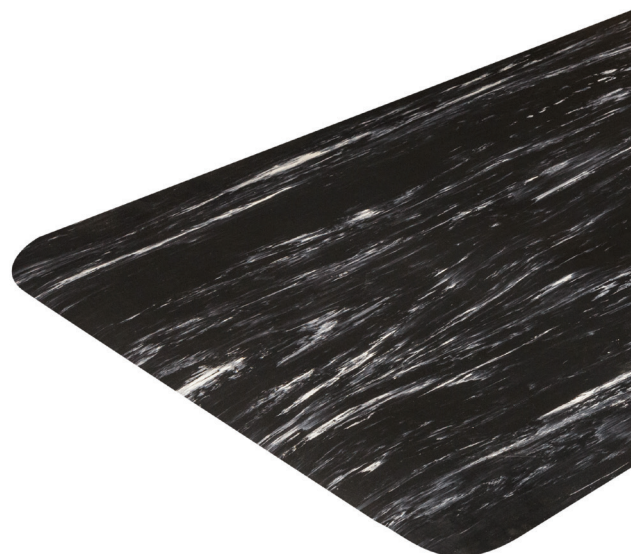
**Total Customization:** 2', 3', 4' widths

**Thickness:** #531 – Standard – 9/16"

#541 – Supreme – 5/8"

### WARRANTY

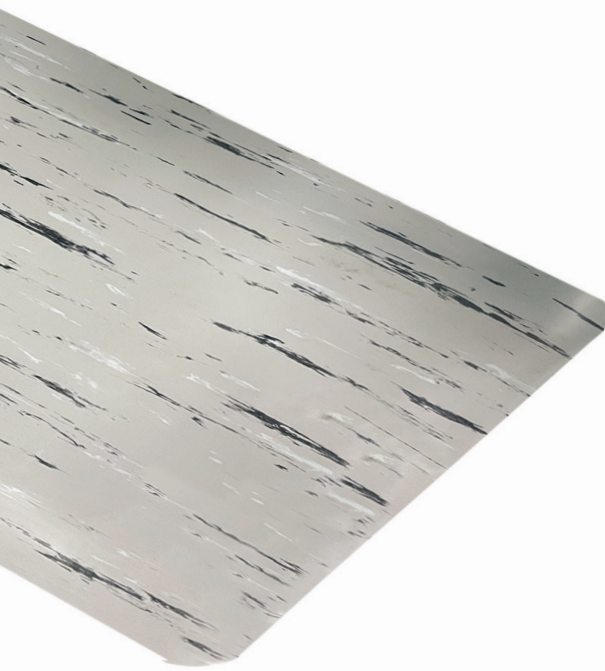
Total Confidence





# #511 Cushion Step Spiffy Vinyl

DRY AREA



## FEATURES

- Puncture resistance vinyl surface for better traction, stability and durability
- Foam PVC sponge fused to smooth marble pattern vinyl surface will match any decor
- Easy to clean, sweep clean or damp mop
- Available in two colors, black and french gray

## SPECIFICATIONS

**Standard Sizes:** 2' x 3'    3' x 5'    3' x 12'

**Roll Sizes:** 2' x 60'    3' x 60'    4' x 60'

**Total Customization:** 2', 3', 4' widths

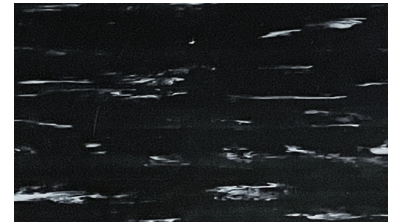
**Thickness:**

**#511 - Standard** – 9/16"

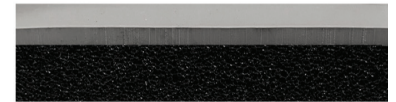
**Colors:** Black, French Gray

## WARRANTY

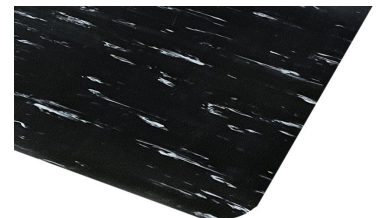
Total Confidence



Smooth marble pattern vinyl surface



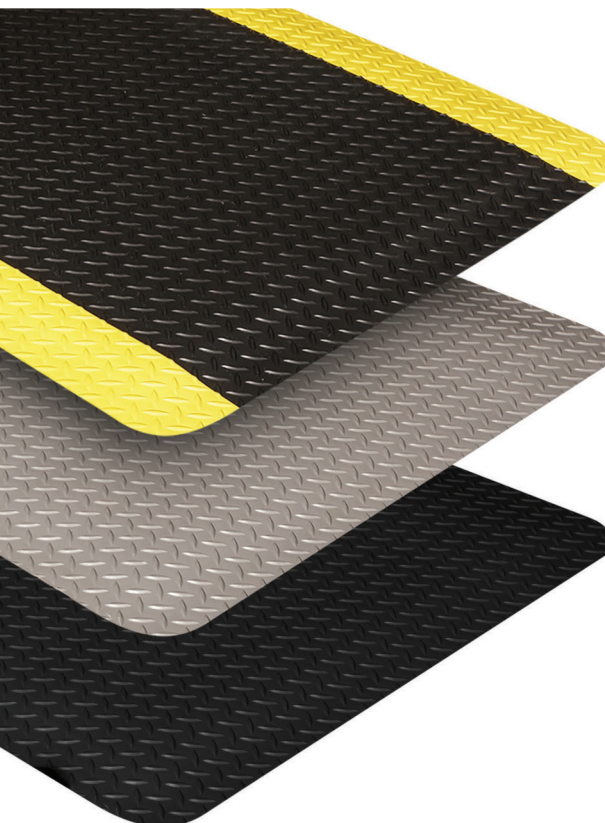
PVC sponge fused to smooth vinyl surface



Rounded corners and beveled edges

# #540/#550 Workers-Delight Deck Plate

DRY AREA



## FEATURES

- Deck plate PVC surface offers comfort and durability
- Patented Zedlan foam combined with our Fusion Technology creates an unmatched level of durability and comfort
- New slip-resistant coating on underside of mat ensures steadiness and control on smooth surfaces
- Use for assembly lines, work stations, cart traffic areas, finishing stations or assembly stations

## SPECIFICATIONS

**Standard Sizes:** 2' x 3'    3' x 5'    3' x 12'

**Roll Sizes:** 2' x 75'    3' x 75'    4' x 75'

**Total Customization:** 2', 3', 4' widths

**Thickness:**

**# 530 - Standard** – 9/16"

**#540 - Supreme** – 5/8" (25% recycled content)

**#550 - Ultra** – 7/8" provides 25 % more comfort (20% recycled content)

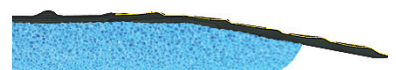
**Colors:** Black & Yellow, Gray, Black

## WARRANTY

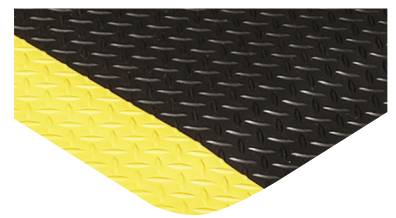
Total Confidence



Deck plate PVC surface



Zedlan Foam with slip-resistant coating



Rounded corners and beveled edges

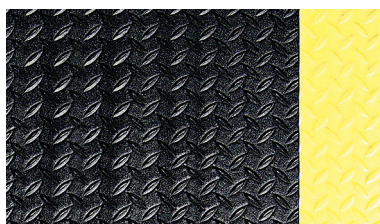


## #560/#562 Wear-Bond Comfort-King

DRY AREA



#562 Foam-injected PVC  
pebble embossed surface



#560 Foam-injected PVC deck-top surface



Zedlan Foam

### FEATURES

- Wear-Bond process molecularly bonds foam-injected PVC top surface with Zedlan foam, creating greater overall comfort than rigid PVC/rubber-type surfaces
- Patented Zedlan foam combined with our Fusion Technology creates an unmatched level of durability and comfort
- Use for work stations, pick modules, pharmacies, packaging areas or cashier stations

### SPECIFICATIONS

**Standard Sizes:** 2' x 3'    3' x 5'    3' x 12'

**Roll Sizes:** 2' x 75'    3' x 75'    4' x 75'

**Total Customization:** 2', 3', 4' widths

**Thickness:** 9/16"

### Colors:

#560 Deck-Top Surface: Black & Yellow, Black

#562 Pebble Surface: Black & Yellow, Black, Gray

### WARRANTY

**Total Confidence**



## #465 Alleviator Comfort-King

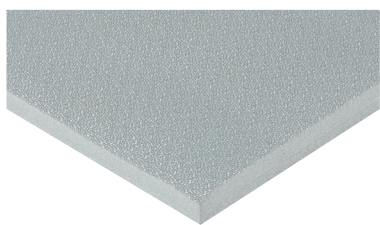
DRY AREA



Textured surface



Zedlan foam



Beveled edges

### FEATURES

- Double-thick patented Zedlan foam adds unmatched comfort and resilience
- Specifically designed for employee work stations
- Use for cashier stations, hotel front desks, pharmacies or retail work counters

### SPECIFICATIONS

**Standard Sizes:** 2' x 3'    3' x 5'

**Roll Sizes:** 2' x 30'    3' x 30'    4' x 30'

**Total Customization:** Up to 30'

**Thickness:** 7/8"

**Colors:** Steel Gray, Black

### WARRANTY

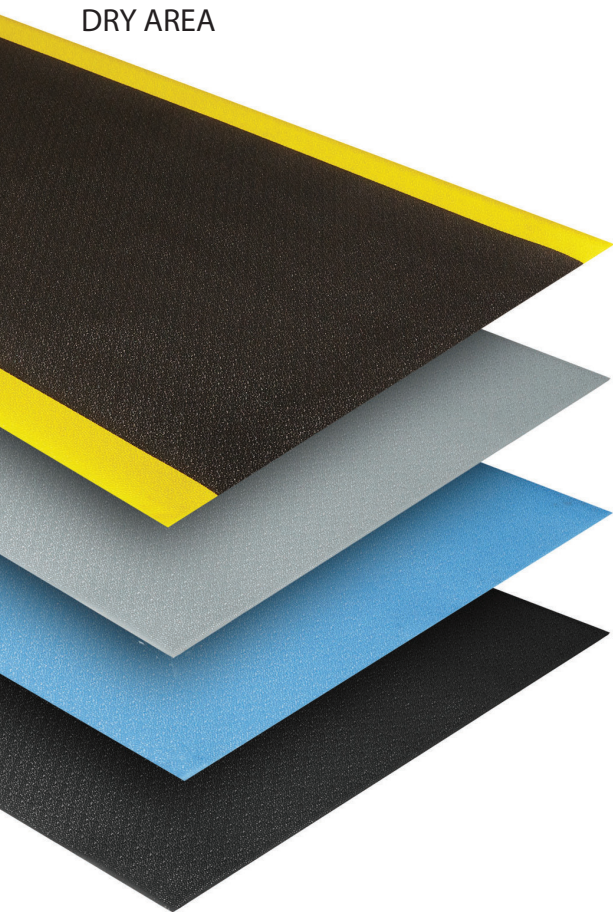
**Total Confidence**





## #440/#445 Comfort-King

DRY AREA



### FEATURES

- Patented Zedlan foam outwears other foam products by nearly 3-to-1
- Anti-microbial additives to help prevent mold, mildew, and bacterial growth.
- Use for work stations, finishing/assembly stations, cashier stations or pharmacies

### SPECIFICATIONS

**Standard Sizes:** 2' x 3'    3' x 5'    3' x 12'

**Roll Sizes:** 2' x 60'    3' x 60'    4' x 60'  
6' x 60'\*

*\*Not available with yellow borders*

**Total Customization:** Up to 60'

**Thickness:**

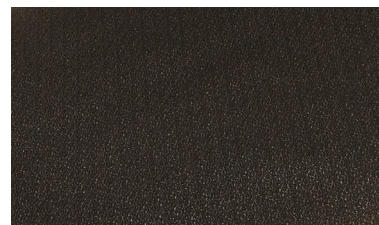
**#440 - Standard** – 3/8"

**#445 - Supreme** – 1/2" provides 33% more comfort

**Colors:**

Black & Yellow, Steel Gray, Royal Blue, Black

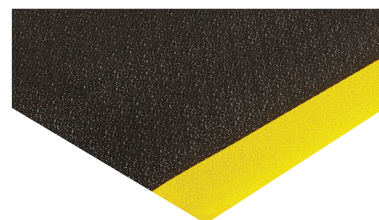
**WARRANTY**  
Total Confidence



Textured surface



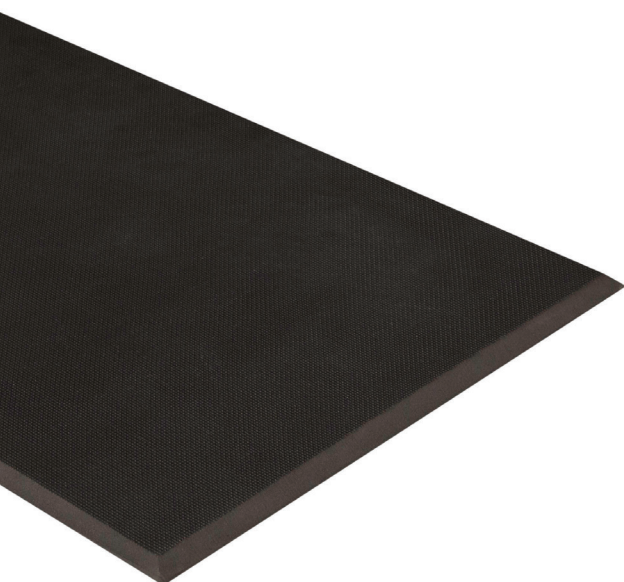
Zedlan Foam



Tapered edges

## #649 Para-Mount

DRY AREA



### FEATURES

- Patented nitrile rubber construction resists water, oil, and solvents
- Anti-microbial properties help prevent mold, mildew, and bacterial growth
- Nitrile rubber properties allow for an easy-to-clean product
- For use in virtually any work station, wet or dry

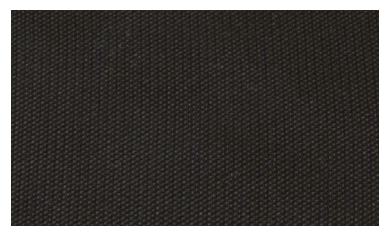
### SPECIFICATIONS

**Standard Sizes:** 2' x 3'    3' x 5'    3' x 10'

**Thickness:** 3/4"

**Colors:** Black

**WARRANTY**  
Total Confidence



Textured surface



100% Nitrile rubber



Beveled edges



## #685 Safety-Step Solid-Top

DRY AREA



Solid rubber



Rubber nubs on underside



Modular built-in connectors

### FEATURES

- Solid rubber interlocking system allows for unlimited length and width onsite configurations (1' increments)
- Optional snap-on ramps available in black or yellow
- Use for factory work stations, large work cells or assembly lines

### SPECIFICATIONS

**Standard Sizes:** 3' x 3'

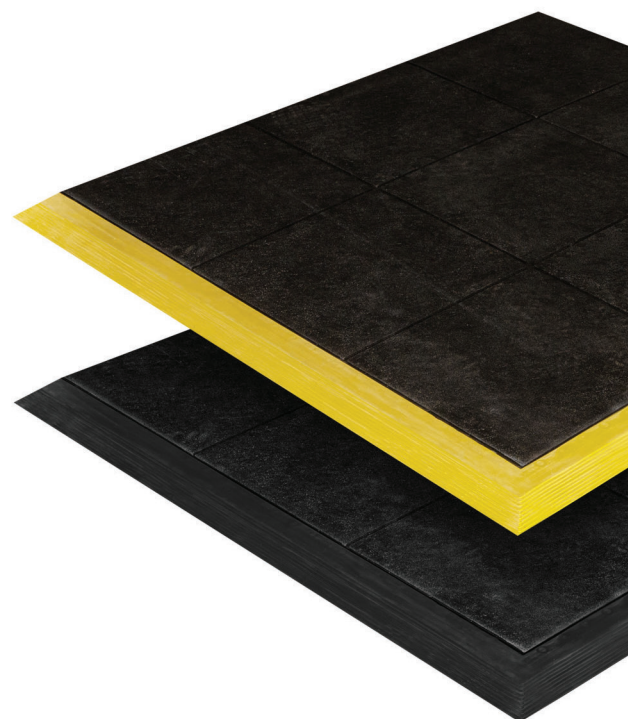
**Total Customization:** Up to 12' wide

**Thickness:** 5/8"

**Colors:** Black with built in connectors, Yellow ramp or Beveled Black available

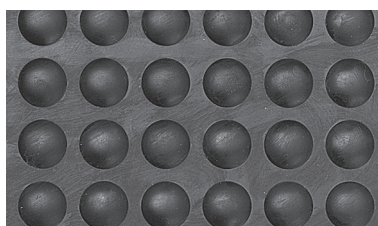
### WARRANTY

**Total Confidence**



## #695 Yoga-Flex

DRY AREA



Bubble-top surface



Industrial grade rubber



Interlocking design with beveled edges

### FEATURES

- High/Low bubble surface encourages micro-movements that reduce fatigue and muscle pain
- Interlocking system allows for unlimited length of matting (47" increments)
- Use for factories, work stations, finishing / assembly stations or shipping and packaging areas

### SPECIFICATIONS

**Standard Sizes:**

**Mat:** 2' x 3'

**Modular Center:** 35" x 47"

**Modular End:** 35" x 47"

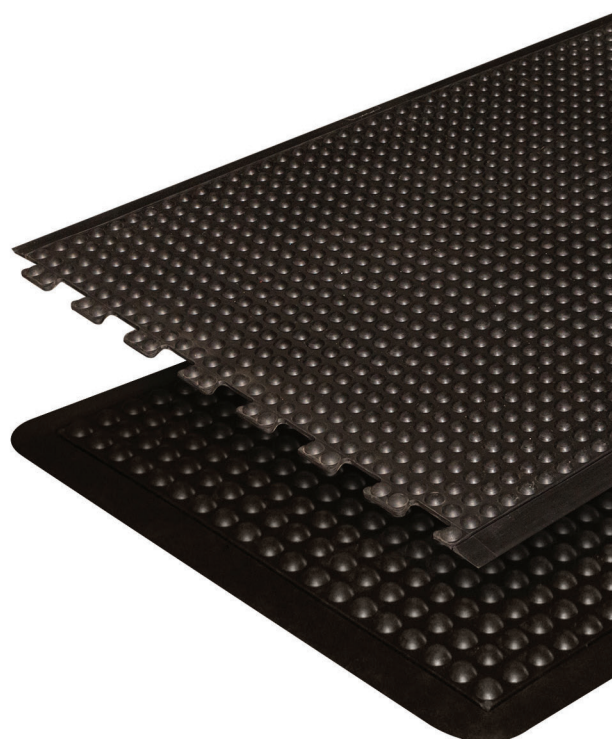
**Total Customization:** Available to form custom mats of any desired length.

**Thickness:** 1/2"

**Colors:** Black

### WARRANTY

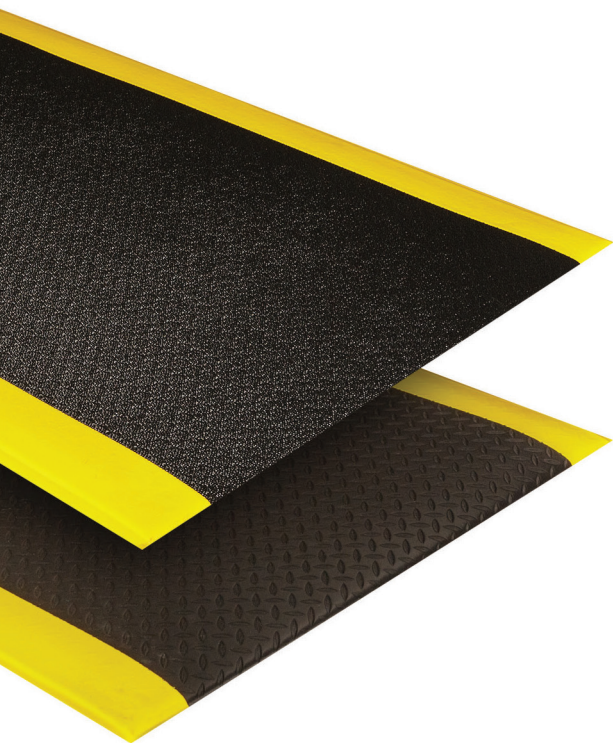
**Total Confidence**





## #520/#522 Wear-Bond Tuff-Spun

DRY AREA



### FEATURES

- Wear-Bond process molecularly bonds foam-injected PVC top surface with industrial grade foam, creating greater overall comfort than rigid PVC/rubber-type surfaces
- Use for assembly stations, packaging areas, service counters or cashier stations

### SPECIFICATIONS

**Standard Sizes:** 2' x 3' 3' x 5' 3' x 12'

**Roll Sizes:** 2' x 75' 3' x 75' 4' x 75'

**Total Customization:** 2', 3', 4' widths

**Thickness:** 9/16"

#### Colors:

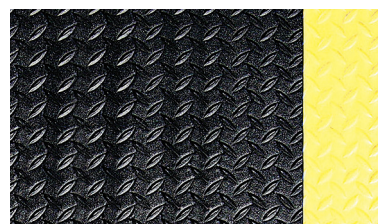
**#520 Deck-Top Surface:** Black & Yellow, Black

**#522 Pebble Surface:** Black & Yellow, Black, Gray

**WARRANTY**  
Total Confidence



#520 Foam-injected PVC  
pebble embossed surface



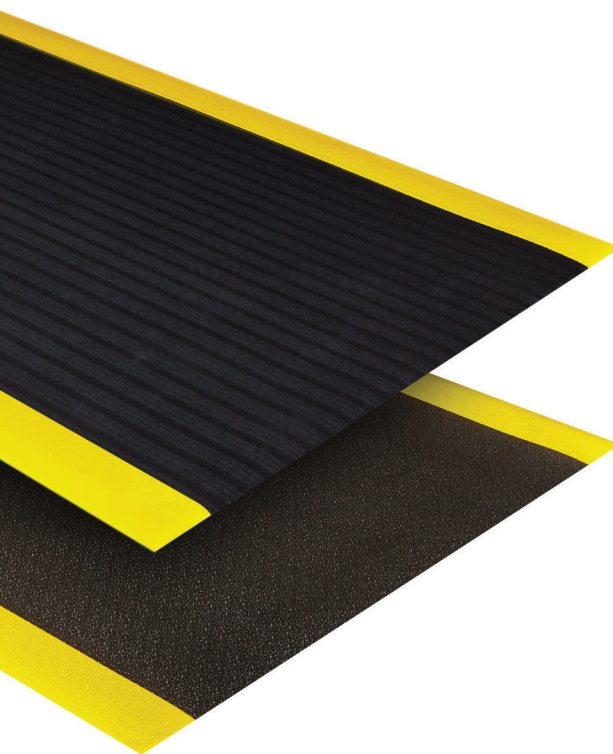
#522 Foam-injected PVC  
deck-top surface



Industrial grade foam

## #410/#411/#414/#430/#431/#432 Tuff-Spun Foot-Lover

DRY AREA



### FEATURES

- Closed-cell PVC foam optimizes economical comfort and fatigue relief
- Beveled edges help reduce tripping hazards
- Use for service counters, mailrooms, cashier stations or warehousing/packaging stations

### SPECIFICATIONS

**Standard Sizes:** 2' x 3' 3' x 5' 3' x 12' 27" x 3'\*

**Roll Sizes:** 2' x 60' 3' x 60' 4' x 60' 6' x 60' \*\*

2'x30', 3'x30', 4'x30', 6'x30' (available in 5/8" thickness only)

**Total Customization:** Up to 60'

**Thickness:** 3/8" - 5/8"\*\*\*

\* Not available in 5/8" thickness \*\*Not available with yellow border

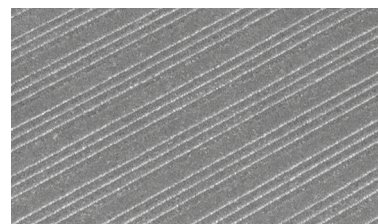
#### Colors:

**#410, #430 Ribbed Surface:**  
Black & Yellow, Black, Gray

**#411, #431 Pebble Surface:**  
Black & Yellow, Black, Gray

**#414, #432 Diamond Surface:** Black & Yellow,  
Black, Gray

**WARRANTY**  
Total Confidence



#410/#430 Ribbed embossed surface



#411/#431 Pebble embossed surface



#414/#432 Diamond embossed surface



## #680/#681 Safety-Step Perforated

WET / OILY AREA



#681 Nitrile Rubber Blend Terra Cotta (grease resistant, 15% recycled)



#680 Rubber Black (general purpose, 47% recycled)



5/8" thick nibbed backing

### FEATURES

- Terra Cotta nitrile rubber blend offers resistance to a wide range of greases
- Heavy-duty modular rubber allows easy drainage of liquid and customization of sizes
- Use for factories, irregularly-sized work stations, standing stations, grinding stations or food service

### SPECIFICATIONS

**Standard Sizes:** 3' x 3'

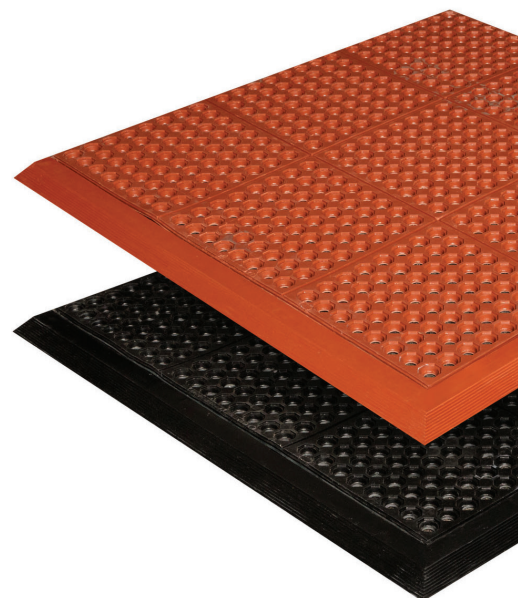
**Total Customization:** Up to 12' wide

**Thickness:** 5/8"

**Finish:** Beveled male/female ramps available

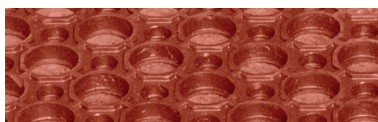
### WARRANTY

**Total Confidence**



## #645/#646 Safewalk-Light

WET / OILY AREA



#646 Nitrile Rubber Blend Terra Cotta (grease resistant)



#645 Rubber Black (general purpose)



1/2" Thick

### FEATURES

- Low profile mat with molded beveled borders for increased safety
- Raised surface rings provide excellent traction
- Use for bars / dishwashing areas, food processing / packaging or laundry rooms

### SPECIFICATIONS

**Standard Sizes:** 3' x 5'    3' x 10'  
3' x 15'    3' x 20'

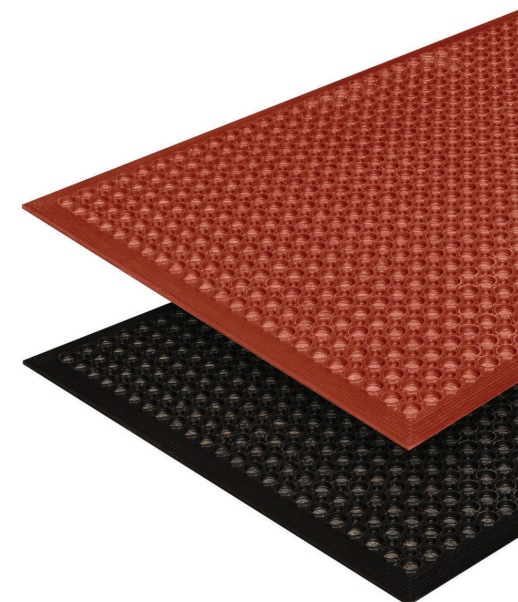
10' length mats and longer have a seam every 5'

**Total Customization:** Unavailable

**Thickness:** 1/2"

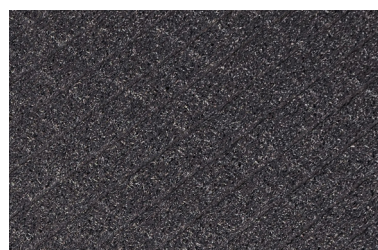
### WARRANTY

**Total Confidence**



## #133 Diamond-Deluxe with Grit-Safe

OILY AREA



Black diamond embossed pattern



1/2" Thick

### FEATURES

- Durable open loop design elevates workers while allowing fluids to flow through
- Specially formulated oil-resistant vinyl resists water and most oils
- Use for factories / garages, work stations, oil changing pits, steel mills or outdoor entrances is extensive

### SPECIFICATIONS

**Standard Size:** 3' x 5'

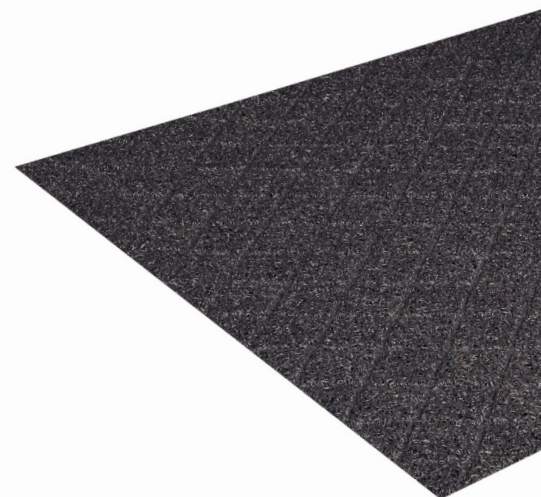
**Roll Sizes:** 3' x 40'    4' x 40'

**Total Customization:** Up to 40'

**Thickness:** 1/2"

### WARRANTY

**Total Confidence**





## #820 Pro-Tekt

RUNNERS

### FEATURES

- Economical, pebble-surfaced vinyl foam runner allows for a variety of uses
- Cost effective, slip-resistant and chemical-resistant floor protection

### SPECIFICATIONS

**Roll Sizes:** 3' x 60' 4' x 60' 6' x 60'

**Total Customization:** Length cuts up to 60'

**WARRANTY** Total Confidence

**Colors:** Black



1/8" Thick



## #850 Deck Plate

RUNNERS

### FEATURES

- Distinctive raised-diamond pattern increases traction and durability
- Easy-to-clean vinyl surface is resistant to most common chemicals

### SPECIFICATIONS

**Roll Sizes:** 2' x 75' 3' x 75' 4' x 75'

**Total Customization:** Length cuts up to 75'

**WARRANTY** Total Confidence

**Colors:** Black



5/32" Thick



## #800 Sta-Kleen

RUNNERS

### FEATURES

- Industrial grade round-rib vinyl runner
- Surface resists normal acids, alkalis, oil, grease and most organic solvents, if removed quickly

### SPECIFICATIONS

**Roll Sizes:** 2' x 105' 3' x 105' 4' x 105'

**Total Customization:** Length cuts up to 105'

**WARRANTY** Total Confidence

**Colors:** Black



1/8" Thick



## #840 Corrugated Rubber

RUNNERS

### FEATURES

- Durable V-groove rubber surface is slip-resistant
- Resists abrasion

### SPECIFICATIONS

**Roll Sizes:** 2' x 75' 3' x 75'

**Total Customization:** Length cuts up to 75'

**WARRANTY** Total Confidence

**Colors:** Black



1/8" Thick



## #871 Gym-Dandy

RUNNERS

### FEATURES

- Cost-effective PVC foam solution to protect floors during special events
- Simple to install with our Gym-Dandy Caddy #872 (sold separately)

### SPECIFICATIONS

**Roll Sizes:** 3' x 105' 4' x 105'

**Total Customization:** Length cuts up to 4' x 105'

**WARRANTY** Total Confidence

**Colors:** Black



1/8" Thick





## Care and Maintenance

### Use & Care Instructions – Entrance Matting

Regular maintenance of your mats is critical to extend mat life and appearance. It is recommended to develop a regular maintenance schedule. Frequency will depend on traffic and soil conditions.

#### INITIAL MAT USE

- 1| Within a few days of receipt, rolled mats should be unrolled and laid flat.
- 2| Normal shedding or “fuzzing” may occur with new carpet top mats. This will disappear after a few vacuumings.
- 3| Some rubber mats may have an oily or sticky film on them. This is a releasing agent that is inherent to molded mats, not a defect. Simply wash down with a mild detergent or degreaser to remove this film.
- 4| To store mats lay them in a dry area with moderate temperatures. Do not stand on end or crush.

#### PERIODIC INSPECTION

Periodic inspections are recommended on a regular basis to check for border tears. To repair a damaged border or area, glue the section together with cyanoacrylate ester type (super glue) adhesive.

#### CARPET MATS AND HDNP PRODUCTS

Entrance mats are used to capture dirt and debris before it can be tracked into a facility. However, mats must be cleaned regularly to extend their usefulness and appearance.

- 1| Vacuum daily
- 2| Hand wash or extract stains with a carpet spotter using a water-based carpet detergent or shampoo.
- 3| Periodically clean the mat with a carpet extractor using a water-based detergent or shampoo. Do not use solvent-based cleaners.
- 4| Excess water is removed by extracting or hanging the mat. Let the mat dry completely before allowing foot traffic to resume.

**IMPORTANT ! Do not use rotary scrubbers or other mechanical cleaners or scrubbers to clean.**

**Do not use solvents, pH detergents, or alkalis directly on the mat or use the mat in areas where these are used.**

## How to Order

With a global distribution network, it's easy to put the strength of our matting solutions to work for you. Visit [www.crownmats.com](http://www.crownmats.com) to find the Crown Matting Technologies distributor/rep nearest you. Or, simply call our customer service team at **800-MAT-LINE (628-5463)**. We welcome the opportunity to discuss our products, take your request for a sample, or answer any questions you may have.

## Warranty

### STANDARD LIMITED LIFE TIME WARRANTY POLICY

New products are warranted against defects in material and workmanship when maintained as instructed in the Use and Care Instructions included with each product. The obligation under this warranty is limited to the original user and to the replacement, repair, or pro-rated refund of said product. This warranty excludes the costs incurred for the installation of the carpet and/or mat. It remains the responsibility of the owner to carry out an inspection of the product prior to the installation.

### This Warranty Is Not Applicable Under The Following Circumstances:

- 1| Improper use, application, installation or cleaning of the product
- 2| Normal wear
- 3| Use of this product for other than its intended purpose
- 4| Lack of proper maintenance as described in the Use and Care Instructions included with each product
- 5| Products that have been altered in any way

If a problem with a product develops during the warranty period, contact your authorized dealer.

**Please go to [www.crownmats.com](http://www.crownmats.com) for additional warranty information.**





T **800.628.5463** F 800.544.2806

T **419.332.5531** F 419.332.4180

2100 Commerce Drive

Fremont, Ohio 43420

U.S.A.

[www.crownmats.com](http://www.crownmats.com)

PRODUCTS AND THEIR RELATED DETAILS ARE SUBJECT  
TO CHANGE. PLEASE CONTACT OUR CUSTOMER SERVICE  
DEPARTMENT TO OBTAIN CURRENT INFORMATION.